



VALMOREL
Savoie • France

Welcome !



THE SKI AREA



Learn to ski with your family on the different Pirates Adventure play areas!

11 play areas for all and all ages !

The Pirates Village, in the heart of the ski area, offers attractions for young children, when the snowpark is for more for teenagers, without forgetting the freeride and boardercross zones.

The Pirates Adventure Village

The Pirates Village, in the heart of the ski area is a huge area for children from **2 to 10 years**, and especially **the meeting point of the whole family !**

It offers many attractions: slides, a giant «spider» course, a turnstile, secret passages, a « snowball » wall. This space is animated from Sunday to Thursday by «Captain Crozet», which launches the Pirate challenges and the treasure hunt.

This area is accessible to skiers and non-skiers. Mothers with young children and to grandparents on foot or with snowshoes! From Valmorel by the Altispace chairlift.

The Pirates Village is also the point of rallying to meet and picnic together ! Tables, benches and deckchairs are available in the sunniest place in the ski area!

Pirates Snowparks and boardercross

Accessible from the Altispace chairlift.

• XS & S levels

Perfect for taking its marks on a very easy and very playful freestyle area with modules only 20 cm high.

• Level M

It is the spot for intermediate and confirmed riders ! It offers lines M thus offering everyone the possibility of express yourself and improve your tricks onvarious modules.

• The path of the Pirates

In the area of the Pierrafort cable car, an easy and fun ski run to ski down with family, decorated with doors, gongs and characters with the effigy of our favorite Pirate!

• The Pirates boardercross

Come and face yourself under the Biollène chairlift at 4 in line behind the «skull & crossbones »: whoops, banked turns and final schuss and win the race well ahead of everyone else ! Level S (blue).

• Les Charmettes boardercross

In the Doucy sector and accessible by the Charmettes ski lift is a dedicated area for lovers of banked bends in all security. To be tested with the family! Level S (blue).

The 4 freeride zones

Freeride areas are secure spaces but not groomed for lovers of sensations.

Discover without further delay each of them: Gollet, Mottet, Riondet and Procureuse.

Black or red track level.



THE SKI AREA

The 4 beginners' sliding zones

4 sliding areas **to learn to ski in complete safety** and tranquility spread over the ski area.

• Rocher - Blanchot:

- Rocher ski lift
- Blanchot ski lift

Access by Valmobus shuttle from the Valmobus "le Pré" bus stop.

• Bois de la Croix - Cheval Blanc area:

- Magic carpet lift of the Bois de la Croix (free)
- Cheval Blanc ski lift (free)

Access by Télécabourg, Crève-Coeur stop or by Valmobus, bus stop «Initiation Bois de la Croix».

• Malatrai - Roches Blanches:

Access by the Pierrafort gondola.

• Echappeaux - Charmettes:

Access by the Combélouvière chairlift from Doucy station or by the gondola from Celliers Village.

NEW THIS WINTER

Quick Quick my ski pass!

Valmorel is opening a «skipass Express» area in the heart of the pedestrian street and is installing a new purchase and recharging terminal at the Altispace cash desk. You can now buy or collect your ski pass between 7am and 11pm.

Buy on line !

The purchase of your ski pass from your mobile phone is easier, more intuitive and faster!

2days/7 season ski pass

Let's ski 2 days per week, consecutive or not, at your convenience throughout the winter. Offer valid for 2 days of skiing between Monday and Sunday of each week.



THE SPRING BARGAINS

From 25 March to 16 April. 2023

1 Grand Domaine adult ski pass purchased = 1 child under 13 years old pass **for free!**

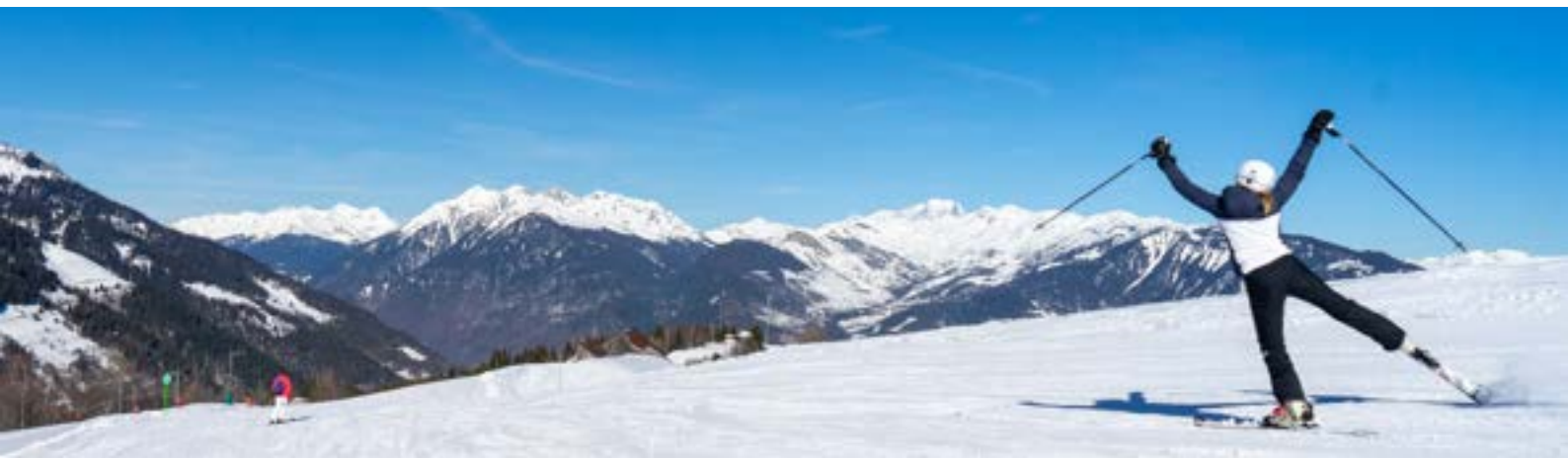
Offer subject to conditions.

Details on [skipass.valmorel.com](https://www.skipass.valmorel.com)

New «Family - Tribe Pass»

Up to 26.50€ discount per person!

From 3 passes of 6 days or more purchased in the same transaction is **10% discount** for all, without proof of identity, on all age categories! With friends, with family, with cousins or children of friends, all the tribes are entitled to their discount.



SKI AREA USEFUL INFORMATION

OPENING OF THE SKI AREA

Le Grand Domaine

From December 17 2022 to April 15 2023

OPENING OF THE SKI AREA

VALMOREL & DOUCY

From December 17 2022 to April 16 2023

Ski pass points of sale

- La Tour from Monday to Sunday: 8.50 am-5 pm.
- Altispace from Monday to Thursday: 8.50 am to 3.30 pm (until 4 pm during french school holidays).
Friday: 8.50 am -5.15 pm.
Saturdays and Sundays: 8.50 am-5 pm.
- Crève-Coeur from Monday to Thursday: 8.50 am to 3.30 pm (until 4 pm. during french school holidays).
Friday: 8.50 am.- 5.15 pm.
Saturdays and Sundays: 8.50 am-5pm.
- Celliers from Monday to Sunday: 9.10 am-4.45pm.
- Doucy from Monday to Thursday: 8.50 am. to 3.30 pm (until 4 pm. during french school holidays).
Friday: 8.50 am.-5.15 pm.
Saturdays and Sundays: 8.50 am-5pm.
- Le Pré from Monday to Sunday: 8.50 am to 3.45 pm.

And 24/24 on [skipass.valmorel.com](https://www.skipass.valmorel.com) until 10 minutes before putting on your skis!

Rechargeable Hands-free cards

are subject to a supplement of € 3 per skipass for all skipass, refundable at the end of stay at the ski lift ticket office or from shopkeepers and partners of the resort.

Le Carré Neige ski insurance

3.10€/day/person. Please visit the www.carreneige.com

High altitude walks - Snowshoeing tracks

Groomed and marked trails to be followed in family, parents-children and grandparents to find his tribe of skiers on the slopes or take a chairlift and enjoy the Pirates area with the children or all simply admire the panorama! Warning, last ascent recommended 45 minutes before the closure of each ski lift.

- Lanchettes chairlift
- Pierrafort gondola
- Celliers gondola
- Combelouvière chairlift
- Altispace chairlift
- Mottet chairlift
- Inter-village telebourg from 8.30 am to 11.30 pm.

The « Resto Pack »

To combine the great outdoors and family meeting around a good meal !

The Resto Pack includes a PEDESTRIAN day ticket and a credit to be used in one of the following partner altitude restaurants:

- L' Altipiano
- La Vache Orange
- Les Voiles du Nant

Tickets on sale at the cash desk only.

The credit must be used the same day as the pedestrian pass.



VALMOREL SKI AREA

Phone : 00 33 (0)4 79 09 80 26

Mail : dsv@dsv-valmorel.com

Web site : [skipass.valmorel.com](https://www.skipass.valmorel.com)

SKI AREA USEFUL INFORMATION



Picnic areas on the ski area

In addition to the many altitude restaurants, you can also take advantage of our different picnic areas, in a unique and panoramic setting, everywhere on the ski area.

The yooner (sledge)

Access with a ski pass, the yooner allows a pleasant descent full of giggles after enjoying the panorama (on certain lifts only).

Le Télébourg, inter-village gondola.

Télébourg tickets available only in checkout.
Telebourg is open every day from 8.30 am to 11.30 pm
Closing for maintenance on Tuesdays from 10 am to 12 pm and from 2.30 to 4.30 pm.

FREE on Fridays from 4 pm and on Saturday all day.

Back stage of the ski area

Free activities, upon registration
Exclusively on skipass.valmorel.com

➤ Follow the trail of the ski patrol-first aid

Discover the job of ski patrol-first aid!
Talk to professionals of the mountain, go behind the scenes of their profession and make your first tracks on freshly groomed slopes!
On Wednesdays at 8.45 am. Red track level required.
From 12 years old.

➤ Passion Damage

Take part in the raffle & try to win, every week, a ride in a snow groomer lasting 30 minutes on the Valmorel ski area (only 1 person per snow groomer).
On Wednesdays and Thursdays.



➤ Visit of the snow factory

Discover the manufacturing secrets of the artificial snow, its usefulness, the technology of snow cannons, the impact on the environment. All ... on skis!
On Tuesdays at 2 pm.
Blue slope level required. From 12 years old.

NEW THIS WINTER

➤ Visit a chairlift station

Discover the backstage of a ski lift to understand how these installations work.
On Wednesdays from 10am to 12pm.
From 5 years old, children supervised by an adult.



PIOU PIOU CHILDREN'S CLUB



ESF MOTTET

Roche Combe - Mottet Hamlet

Opening every day from 9am to 6pm

Meeting place : ESF Mottet

Our team of 160 ski instructors offers you lessons adapted to all!

Mail : contact@esf-valmorel.com

Web site : www.esf-valmorel.com

Facebook : ESF valmorel

Phone Valmorel : 00 33 (0)4 79 09 81 86

Phone Doucy : 00 33 (0)4 79 24 22 38

NEW THIS WINTER

The Piou Piou club in Valmorel

A new chalet-desk on the snow garden.

A covered tunnel on the magic carpet lift for more comfort for the children.

Snow Garden of Club Piou Piou

Children aged between 3 and 4, children aged 5 beginners.

Lessons from **Sunday to Friday**.

Fun routes are arranged in a protected area so that the ski is felt like a pleasure and a game.

Levels: Beginners, Ourson, Flocon.

For the 5-year-old children who already have the Ourson level, Snowflakes and Stars courses take place at ESF meeting in the hamlet of Mottet.

Information and sales points

■ Mottet office:

Open every day from 9 am to 6 pm

■ Bourg Morel office:

Tuesday to Friday 9 am to 12.30 pm and from 2 to 6 pm

On Saturday from 10 am to 7 pm

On Sunday and Monday from 9 am to 6 pm

Schedule

■ Piou Piou Valmorel, from Sunday to Friday

- Daycare: 8.45 am to 5.15 pm
- Snow garden: 8.45 am to 5.15 pm
- February holidays: 8.30 am to 5.15 pm

■ Piou Piou Doucy

- Daycare: 8.45 am to 5.45 pm **Sunday to Friday**
 - Snow garden: 8.45 am to 5.45 pm from **Sunday to Friday**
- In January and March opening only from 8.30 am to 12.15 pm
- February holidays: 8.30 am to 5.15 pm



SKI LESSONS

Group lessons

The best way to start, to perfect and discover all the sliding on snow with our ESF instructors!

■ Children from 6 to 12 years old

- **Ski lessons:** from the Ourson to the Golden Star (package option available for Ourson, Flocon and 1st Star).
- **Snowboard lessons:** from 8 years old, all levels. Télébourg tickets available only in checkout. **The Mini • •**
- **The Mini Rider:** for children between 6 and 8 years old, beginners in snowboarding, an initiation on the Piou Piou Garden in complete safety from 4.30 pm to 6 pm during the February holidays. Télébourg tickets available only in checkout. Télébourg tickets available only in checkout.
- **Competition course:** to improve your skills after the Gold Star and discover the slaloms timed (only on vacation school).

■ Teenagers from 13 years old: ski lessons and snowboarding lessons for all levels.

- **Ado'Aventure:** «à la carte» program according to the ski conditions and desires of the group, skiing all snow all terrain, fun initiation to DVA research (avalanche transceiver supply), initiation to freestyle and freeride, laser rifle shooting, olympics, snowshoe adventure in the forest ... Gold Star level required (school holidays only).
- **Competition course** with video sessions and stance tips. Gold Star Level required (school holidays only).
- **Team Rider course** with initiation to Freestyle. Gold Star level required (french school holidays only).

■ Adults

- Ski lessons and snowboard lessons all levels.
- **Off-Piste Freeride course:** from 4 people, on registration.
- **Weekends during the season:** every Saturdays from 2 p.m. to 5 p.m. from Decembre 31st. 14 sessions.

■ Fun Kids Lessons for Children: all ski and snowboard levels.

- **ESF Club** for competition, Freestyle for addicts. Gold Star level required.
- **Team Rider Group**, discovery of all the slides. Gold Star level required.
- **Leisure skiing** for adults, discovery of off-piste skiing and ski touring. Level Class 3 required.

TIPS TO MAKE YOUR STAY EASIER

- Regular shuttles to the Mottet hamlet from all the hamlets (Valmorel).

>> NEW: meeting places for morning collectives lessons split over several sites according to level (Mottet, Altispace, Pierrafort) during french school holidays.

Private lessons

To learn at your own pace!
From 5 consecutive lessons.

■ Low season

- Christmas week (12.30 pm to 2 pm).
- Excluding holidays (9 am, 10.30 am, 12.30 pm, 2 pm and 3.30 pm).

➤ **Good deal:** if you book more than 4 private lessons, you benefit from a discount of 10% on all of your lessons!

■ High season

- New Year's Day (12.30 pm to 2 pm).
- February holidays (1.30 pm to 3 pm).

OTHER ACTIVITIES OFFERED BY THE ESF

■ Skiing or snowboarding for beginners.

Night initiation without ski pass!

Course for children or adults - one to two people **in the snow garden** of the Piou Piou club. Sundays, Mondays and Wednesdays from 5.30 pm to 6.30 pm during the February holidays.

■ Ski touring

Discover ski touring & take your time to admire the snowy landscapes.

- Day / half day outings or Initiation : 1hour30. From 7 to 8.30am or from 5.30 to 7pm.

ESF APRES SKI ACTIVITIES



NEW THIS WINTER

Yooner Sledging

Discover the Yooner in après-ski with an ESF instructor! This sled will give you new sliding sensations. You will race down the slopes from the top of the Pierrafort gondola to Valmorel. Come with your gloves, snow boots and helmet. From 8 years old.

THE USUAL FUN ACTIVITIES

Airboard

Come and experience extraordinary sensations thanks to the inflatable high-tech sledges ! Discover the pleasure of a new glide throughout the descent that you perform from the top of the Pierrafort gondola to Valmorel. Strong sensations and adrenaline guaranteed!
> From 13 years old.

Aperitif Trapper

Daniel accompanies you for a snowshoe outing in the light of the headlamp in the heart of the Morel valley for a friendly moment with a Savoyard aperitif.
> Every evening in January from 5.45 p.m. to 8 p.m. Choice of: the «Apéro Trappeur» formula or the "Fondue in a yurt" formula.

Biathlon

Have fun with your family with our Biathlon activity, a «fun» après ski with an introduction to laser rifle shooting and a fun course on snow!

On the snowgarden of Piou Piou Club.

> During the french school holidays.

From 5.30 pm. From 8 years old.

Building igloos

An unforgettable moment during construction of your igloo! A ski instructor will give your child all the advice and tips necessary to build an igloo as a trapper or an Inuit.

Hot chocolate.

> Fridays from 5 pm to 7 pm. From 5 to 18 years old.

Fat Bike

Do not miss the opportunity to try the Fat Bike on snow! Every evening, a fully graduated mountain bike instructor will guide you on a hilly route in the forest.

Pleasure, sensations and fun will be waiting for you!

> Every evening. Minimum height: 1.50 m.

Handi ski

Because skiing should be accessible to all, the ESF offers disabled ski outings. In a dual ski, the ESF instructor will accompany the person with reduced mobility to spend a day or half-day on the ski area with their family & friends.



ESF APRES SKI ACTIVITIES



Hike'n Fly

This winter, experience a new adventure: the pleasure of snowshoeing & then discover the magic of a paragliding flight, the Hike'n Fly!

> In the afternoon or at the end of the day (come with hiking boots, a pair of snowshoes and telescopic poles).

100% electric snowscooter for children

At the end of the day, let your children discover the 100% electric snowscooter! They will discover new sensations with friends on the snow, an unforgettable memory for them on a safe and fun course, on the top of the snow garden.

Every day from 5pm. From 6 to 12 years old.

Mountain Kart

Every evening at 4.45 pm, an ESF ski instructor will introduce this new activity during a surprising descent from the top of the Pierrafort gondola to Valmorel. Driving on snow while gliding.

> From 13 years old. Teens accompanied by a adult.

ESF Olympics

Let's have fun with family and take part in the ESF Olympics during the February school holidays. Timed skill route, initiation to laser rifle, avalanche transceiver supply search and snowballs fight. On Wednesdays from 5.30 p.m. to 6.30 p.m. Appointment on the Piou Piou garden.

> Per team, up to 5 people, for all !

Snake Gliss

Every evening at 4.45 pm, slide down from the Pierrafort gondola aboard a Snake Gliss driven by an ESF instructor. Pleasure, fun and thrills guaranteed throughout of this descent.

> From 6 years old.

For groups of 10 people or more Apéro Gliss or Resto Gliss (with aperitif or meal in a mountain restaurant).

Fondue evening under a Yurt

Unusual snowshoe experience under a typical yurt in the heart of the forest and back to the light of the headlamp.

Single menu meal: salad, cold meat, Savoyard fondue, compote.

Snowshoes included.

> On Wednesday evening. From January. From 6 pm to 10 pm.

Paragliding Tandem flights

Fly safely with David and Christian, our qualified instructors - champion and vice-champion of France & ex-members of the France team of paragliding.

> Meet at the top of the Altispace chairlift. Pedestrians are welcome!

| WINTER 2022-23 |

SNOW ACTIVITIES



SNOW ACTIVITIES

WITH FAMILY

Toboggan run in Valmorel

Right in the center of the resort, the track is lit until 9 pm.

Forbidden to skiers and dogs.

Toboggan runs in Doucy

• The Doucy Aventures toboggan run

The pleasure of sliding over 2.4 km. Sensations and laughter guaranteed for adults and children!

Approved toboggan rentals in the sport shops.

Ski pass or pedestrian ticket to access the chairlift.

• The toboggan for young children in the resort center.

Flood light tobogganing until 8 pm.



SKI TOURING

• Ski touring is a practice that allows you to think outside the box. Discovery of the mountain in its original state, far from the crowds and without lifts.

• The ski touring trail (Valmorel)

«Le Toboggan» is a course of 535 m of difference in height, for a total distance of 3200 m.

It is composed of an easy first level part, accessible to beginners and a more technical second part.

The return takes place on the blue slope «Les traverses». The route is plotted and signposted for the exclusive use of ski touring, under their full responsibility.

• Safety tips :

Check the weather report and the avalanche risk.

Be warmly equipped without forgetting your technical equipment (shovel, probe, avalanche transceiver, etc.), inform those around you of your route and follow the signposts.



SNOW ACTIVITIES

SNOWSHOEING

• Florent Espagnac

›Phone: 06 77 84 73 90
›Email: florent_espagnac@yahoo.fr
›Website: www.florentespagnac.fr
›Facebook: Florent Espagnac Accompagnateur en montagne - Alpes Valmorel
The mountain guide offers the rental of snowshoes.

➤ The little trappers by night

Let your children live a beautiful experience in the nature in winter and at night. Fires in the snow, slides, guaranteed sensations. From 7 years old.

➤ Discovering the secrets of the forest

An outing to discover the forest environment and its hidden secrets: footprints and other signs of life. Ideal for families.

➤ The great trappers' evening

An evening through the woods on the theme of trappers with headlamps.

A small aperitif based on Savoyard products around a campfire in the snow.

In family or between adults.

›From 7 years old.

➤ Playful descent through the woods

Departure from the top of the chairlift. After a reading of the landscape to enjoy a 360° panorama, a descent through the woods. A fun and sensational approach. Natural slides in a beautiful forest.

›From 8 years old.

➤ Freeride descent and aperitif by night

After a day of skiing, enjoy the atmosphere at the end of the day for a playful descent from the summit of Pierrafort to the resort. The hike ends by the light of headlamps after a nice aperitif in the mountains.

›From 4.15pm to 7.45pm during school holidays.

›From 9 years old.

➤ A day in the great forest of Pierre Larron

Let's discover for a day the beautiful forests overlooking the Morel valley. Varied landscapes and small authentic forest for a friendly break during a shared meal. A packed lunch and a Savoyard meal prepared by your guide.

›From 10 years old.

➤ Descent to the old villages

A snowshoeing descent from Valmorel, through the sunny slopes towards the old villages. Following in the footsteps of our ancestors, this is an opportunity to retrace the history of the valley from the mountains to the old villages. Return by shuttle from Les Avanchers.

›From 7/8 years old.

➤ On the trail of our mountain fauna

Set off on snowshoes in the footsteps of our mountain wildlife! Let's get off the beaten track for a more natural and authentic approach.

›From 7 years old.

➤ Descent to the mountain village of Celliers

An original and extremely wild descent to the little-known valley of Celliers located at the foot of the Lauzière massif. This is **THE** hike to do for amateurs! Mountain atmosphere guaranteed! A ticket for the Celliers gondola is required.

Snack is not included.

›From 11 years old.

➤ A weekend in the Beaufortain massif

The Beaufortain massif is an ideal playground for snowshoeing. Immensity, 360° panoramas and wild areas with large white areas as far as the eye can see... Comfortable night at the Nant du Beurre mountain refuge opposite Valmorel. On request.



SNOW ACTIVITIES

• Sylvain Jugand - Doucy

Valmorel Outdoor Activities

›Phone: 06 33 56 95 00

›Email: contact.vao73@gmail.com

➤ Day hike at the logis des fées

In the Lauzière massif, approach by the Celliers gondola, climb to the heart of a sector where the mountain reminds you of its immensity, breathtaking landscapes...

›From 10 years old. On request only.

➤ Trapper's walk - For children

Discover the magic forest on snowshoes, a walk that is both instructive and fun. Snowshoes provided.

›For 8-12 year olds.

➤ The balconies of the Eau-Rousse mountain stream

A walk on the heights to discover the Eau-Rousse valley.

›From 8 years old.

➤ Introduction to snowshoeing

An introductory walk to learn the techniques of snowshoeing. This outing allows you to get in touch with snowshoeing during a walk in the forest.

›From 6 years old.

➤ The Quarante Planes village

Admire an exceptional panorama of the Valmorel valley. A walk on the heights of the resort with a return through the virgin snow fields.

›From 8 years old.

➤ Unusual stroll & the fondue tree

Unusual walk for nature and gastronomy lovers. Snowshoe walk followed by a local aperitif and a fondue tasting in the forest. The cheese flows, accompanied by local specialities for a convivial and original moment!

›From 6 years old.

➤ Nordic walking

Starting from Doucy-station

Initiation and improvement in this sport which combines well-being and health in the forest or on the Doucy crests. Poles provided for the outing. Initiation from 14 years old. Improvement from 16 years old.

➤ Arboretum of Doucy

Huddled under its white coat in the heart of winter, it has more than one secret to reveal to us. A conservatory for fir biodiversity, its seeds have been chosen to reforest other mountains.

›From 10 years old.

➤ Snowshoeing and well-being

Combine the benefits of a walk in nature with relaxation techniques.

›From 10 years old. School holidays only.

➤ 3hours Snowshoe hike

Discover a mountain village, slide down the slopes and enjoy a hot drink.

›From 10 years old.

➤ Snowshoeing & the ermine tracks

Walk on the heights of the resort, between undergrowth and edges, on the trail of the ermine. Everything you need to know to decode animal tracks.

›From 10 years old.

• Jean-Pascal Simond

›Phone: 06 11 07 50 66

›Email: simond.acrofoby@wanadoo.fr

›Website: www.valmorel-montagne.com

›Facebook: [valmoraquettes](https://www.facebook.com/valmoraquettes)

Possibility to rent snowshoes from the guide.

To the hermit's place

Come and make your tracks in the wildest corners of the Avanchers forest, populated by roe deer and gnomes. Off the beaten track. Snowshoes are the ideal equipment for a hike to discover the mountain environment in winter.

›From 8 years old.

The initiation walk

For beginners and to get back into the swing of things. Let's discover all the facets of snowshoeing and all the other possibilities of walking and snowshoeing in the valley.

›From 7 years old. Return by Valmobus.

SNOW ACTIVITIES



↗ Snowshoeing aperitif by night

- An easy walk will allow you to discover the joys of snowshoeing as well as some little known Savoyard flavours. You will taste the wines of the Grisard domain and the fruit juices of the Source du Verger. Aperitif around a campfire.
- > From 7 years old.

↗ The sleeping nature in winter

- Let yourself be guided through the still wild and magical places of the Morel valley. Snowshoes are the ideal equipment for a hike to discover the mountain environment in winter: forest, animal tracks...
- > From 7 years old

↗ The chamois of Crève-Tête summit

- You will see the highest summits of Savoie and you will try to find the chamois in their wintering area.
- > Difference in altitude +140 m.
- > From 7 years old.

↗ Waterfalls and St Roch chapel

- From a high altitude itinerary where good snow rhymes with beautiful landscapes. An easy outing to discover nature with your family.
- > Difference in altitude: -430 m. From the top of the ski lifts.
- > From 7 years old.

↗ The Crève-Tête crests

- Day hike on snowshoes on the Crève-Tête ridges from Valmorel. A superb place where chamois and grooses live with a panorama of more than 300° facing Mont Blanc, Lauzière, Beaufortin, Grande Casse, 3 Vallées and Vanoise glaciers. A well-deserved snack (out of the bag) for a day that is well worth it!
- An invigorating hike with a 680 m difference in altitude.
- > From 12 years old.

↗ The sunny hillside

- A fun snowshoeing descent in the forest, from a high altitude route. The descent will be made from a ski lift in a splendid landscape with a view of Mont Blanc and the Grande Casse.
- > From 8 years old.

► IN THE AIR

↗ The Zipline

Fly as a duo or on your own on the longest double zip line in France from the top of the Altispace chairlift to the Prariond ski run.

Length 1400m. Maximum height: 150m.

Choice of speed: 50 to 100km/h. Accessible to skiers, snowboarders and pedestrians with snowshoes.

Online booking recommended at: www.magicadventure.org or ticket on site subject to availability.

NEW: Fly in parallel and share an experience for two!

> Online reservation advised on:

www.magicadventure.org/la-tyrolienne

Or ticket on site subject to availability.

↗ Tandem paragliding flights with «Here We Go!»

Valmorel-Doucy

- Tandem paragliding flights with «Here We Go!»

Discover the thrill of flying with a paragliding experience. Take off from the top of the Lanchettes chairlift. Skiers only.

If you come with a micro SD card, Franck offers your photo-video report! Max 80kg.

> From 10 years old.

> Telephone: 06 13 02 03 96

> Email: francky.morard@gmail.com

► NORDIC GATAWAY

DOGS SLEIGH RIDES

↗ Dog sleds rides

> Telephone: Ludovic and Claire: 07 85 99 61 90

> Email: contact@escapadesnordiques.fr

> Website: www.escapadesnordiques.fr

> Facebook: [escapades nordiques](https://www.facebook.com/escapadesnordiques)

Reservation required by email or telephone in the evening from 7pm to 9pm

Meet at the Aigle Blanc sector.

Easy access with the free Valmobus shuttle.



SNOW ACTIVITIES

► DOGS SLEIGH RIDES

➤ First time 1 hour or 30 minutes

- You are installed in your sled towed by 8 to 10 Nordic dogs and guided by pro mushers, state graduates. An encounter warm with enthusiasts and their dogs.
- > From 2 years old.

➤ Teaching how to drive a dog sled team

- Your dream of adventure within reach: initiation driving your own team from 3 to 4 dogs, in the tracks of the instructor.
- Plan half a day for 1h30 of piloting.
- Sports activity requiring good physical condition.
- > From 14 years old.

► UNUSUAL EVENINGS

➤ The echo of the stars

Doucy - Le Villaret village

- The Echo des étoiles observatory, located 10-15 minutes from Valmorel, invites you to come and look through the eyepieces of telescopes with your family. You will be welcomed and supervised by a passionate physicist. Winter offers us beautiful observations in astronomy.
- > Phone : 07 66 68 79 30
- > Mail : contact@echodesetoiles.fr
- > Web site : observatoire.echodesetoiles.fr

➤ Fondue under a Yurt

- Unusual escape. Join our yurt at heart of the forest to share a friendly time with family or friends around a Savoyard cheese fondue. The yurt is designed in an eco-friendly spirit, lit by candlelight and equipped with a dry toilet.
- A heaven of peace in the heart of the forest, yet close to the village of Valmorel. Maximum 19 people.
- On foot or with snowshoes, 10 minutes away from the residence Cheval Blanc.
- > From January
- > Phone: 06 77 61 49 65
- > Website: www.valmo-insolite.fr
- > Email: valmobourricot@outlook.com

► INDOOR

➤ Cinema of Valmorel

- 2 rooms and 4 screenings per day. Blackbuster films. Screenings at 6 pm and 9 pm every evening. Extra screening at 2.30 pm in case of bad weather. Single tickets and subscriptions.
- > Phone: 04 79 09 81 20

➤ Indoor Golf

- Golf practice. A High Tech game simulator. Contact parking lots chalet. Entrance station. Everyday from 9 am to 10 pm
- > Phone: 04 79 09 99 91 and press 1

► HERITAGE

• The 15th century St-André church in Les Avanchers

The church is in baroque style, a style characterized by opulence. Its bell tower measures 32 m from the base to the top of the cross. Free tour. Opening: on request at the town hall.

> Phone: 04 79 09 83 27

• The heritage museum in Les Avanchers

Monday to Friday 9 am to 12 pm
On Wednesdays from 9 am to 12 pm
and from 2 pm to 5.30 pm. Free.

• Gourmet torchlight walk

At nightfall, go exploring Valmorel and let yourself be told the story of mountain tourism and the saga of winter ski resorts. Tasting of Savoyard specialties. On Wednesdays from 7.30pm
Registration from the tourist office. Limited places. From 10 years old.



| WINTER 2022-23 |

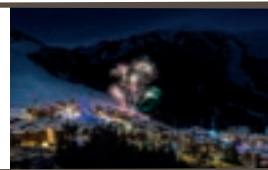
EVENTS



PROGRAMME DES ÉVÉNEMENTS HIVER 2022-2023



24 DÉCEMBRE & 31 DÉCEMBRE



DU 7 AU 28 FÉVRIER



17 JANVIER



21 & 22 JANVIER



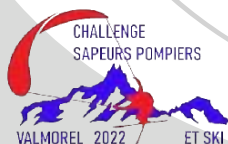
DU 30 JANVIER AU 3 FÉVRIER



FÉVRIER & MARS



11 & 12 MARS



DU 15 AU 17 MARS



VALMOREL
Savoie • France

ON TUESDAYS FROM 7 TO 28 FEBRUARY ALTISPACE CHAIRLIFT

GRATUIT

SKI SHOW
VALMOREL



AU PIED DE L'ALTISPACE




VALMOREL
Savoie • Alpes

esf VALMOREL



13
JOURS

19^e
ÉDITION

7 - 19
JANVIER
2023



PARTENAIRE STATION 2023

17 JANVIER 2023

WWW.GRANDEODYSSEE.COM

07-08 MEGÈVE 09 LA CHAPELLE D'ABONDANCE 10 BERNEX 11 LA TOUSSUIRE - LE CORBIER 12 LES KARELLIS 13 AUSSOIS
14 BESSANS - VAL CENIS 15 VAL CENIS 16 PRALOGNAN-LA-VANOISE 17 VALMOREL - DOUCY 18 COL DE PORTE 19 VILLARD DE LANS

Partenaire Titre



Partenaire Majeur



Partenaires Officiels



Partenaire Trophée



Partenaires Institutionnels



Partenaires Médias



Partenaires Etapes



Fournisseurs Officiels





SPARTAN®

COURSE À OBSTACLES

VALMOREL WINTER

21-22 JANVIER 2023

SPARTAN **SUPER** SPARTAN **SPRINT** SPARTAN **KIDS** SPARTAN **ENDURANCE**

INFOS ET INSCRIPTION : [FR.SPARTAN.COM](https://fr.spartan.com)

hosted by:

CRAFT
FUNCTIONAL SPORTSWEAR

VALMOREL
Savoie - France



STC
NUTRITION



SPARTAN VALMOREL



**RISE
UP**



D-TOUR 30 series

RISE



VALMOREL
Savoie • France

ENTERTAINMENT

IN VALMOREL & DOUCY, every Sunday at 6 p.m.
You are invited to the **welcome forum** to discover the program of events
and entertainment around the **traditional mulled wine**



All week long, events for everyone.
Thrilling and themed adventures. Photoshoots, games and **challenges**.
Gifts galore to be won that will delight young and not so young !
Conferences and screenings on heritage, gastronomy and mountain sport



The **program** of events and activities is **available**
from the tourist office and from the shopkeepers on **Fridays**

ENTERTAINMENT

**DES ANIMATIONS
TOUT AU LONG DE LA SAISON**

AVEC

gulli

Gulli Winter Games
Chasses aux trésors
Placette Quiz
Curling Humain
Batailles de boules de neige
Spectacles enfants

...



Doucy
Valmorel • côté nature

**MERCREDI,
C'EST GULLI!**

Chococooning Gulli
Gulli Party
Gu'Live

DES CADEAUX À GAGNER LORS DES SOIRÉES GULLI!

Viens récupérer ton Carnet Gulli
à l'Office de Tourisme de Doucy pour jouer en famille !

 **HONDA**



VALMOREL
SAISON • FRANCE
PARTENAIRE OFFICIEL

Nouvelle
CIVIC

 **HEV HYBRID**

Intensément
hybride



Honda France

Honda **e:TECHNOLOGY**

Découvrez-la sur auto.honda.fr

Consommations et émissions en cycle mixte WLTP selon la version : de 4,7 à 5,0 L/100 km et de 108 g à 114 g de CO₂/km.

*Sous réserve du suivi régulier de l'entretien Honda selon les préconisations constructeur et les indications de l'ordinateur de bord. Offre soumise à d'autres conditions disponibles sur auto.honda.fr. **Garanties des batteries : hybrides 5 ans, standards 3 ans.**

Pour les trajets courts, privilégiez la marche ou le vélo #SeDéplacerMoinsPolluer

HONDA CHAMBERY

SUD EST AUTOMOBILES

1911 RD 1006 73490 LA RAVOIRE

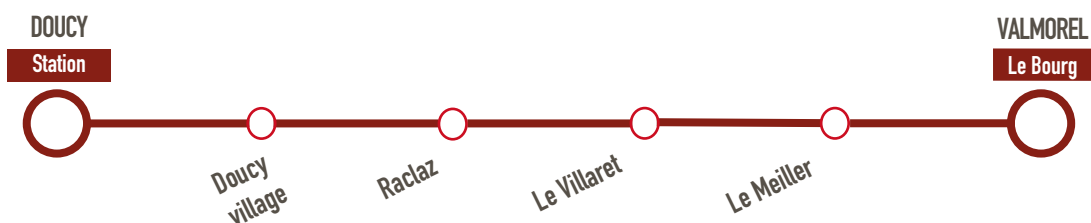
[WWW.SUDESTAUTOMOTO.COM](https://www.sudestautomoto.com)



Scannez et jugez la
nouvelle CIVIC par
vous-même !

SHUTTLE «LA LIGNE DES CIMES»

Du 18 décembre 2022 au 1^{er} janvier 2023 et du 4 février au 5 mars 2023



Départ Station de Doucy - Sous le restaurant Le Blizzard

Doucy station	Doucy village	Raclaz	Le Villaret	Le Meiller	Valmorel
9h00	9h08	9h12	9h16	9h21	9h30
11h30	11h38	11h42	11h46	11h51	12h00
16h30	16h38	16h42	16h46	16h51	17h00

Départ Valmorel - Arrêt Le Bourg

Valmorel	Le Meiller	Le Villaret	Raclaz	Doucy village	Doucy station
9h30	9h39	9h44	9h48	9h52	10h00
12h00	12h09	12h14	12h18	12h22	12h30
17h00	17h09	17h14	17h18	17h22	17h30

Service gratuit. Retrouvez toutes les informations sur www.valmorel.com, ou en scannant le QR Code !



| WINTER 2022-23 |

RESTAURANTS



RESTAURANTS

➤ L'Aigle Blanc

La Charmette Village
Easy access by Valmobus
> Phone : 04 79 09 83 76

➤ L'Après-Ski

Le Bourg
• At the bottom of the Altispace lift, the Après-ski restaurant welcomes you all day long. Located at the foot of the slopes, the whole team awaits you in a place of revisited gastronomy. On the terrace, enjoy the sofas, deckchairs or tables to discover our daily menu. A la carte menu, world cuisine or typically local!
>Phone: 04 79 00 98 89
>Facebook: L'Après-Ski Valmorel

➤ Auberge Le Cheval Noir

Les Avanchers village
• Traditional and family restaurant. Daily menu at lunch-time. Savoyard specialities. Possibility of take-away meals. Village local bar. Open all year round.
>Phone : 04 79 09 89 89
>Facebook : Auberge du Cheval Noir

➤ La Casa Pizz

Le Bourg
• Wide choice of pizzas kneaded and prepared on the spot in an artisanal way. Quality products, home cooking and traditional recipes. Free delivery to your place in the resort. Open every day. Don't forget to book!
>Phone: 04 79 09 80 18
>Facebook: La Casa Pizz'Valmorel

➤ Le Chalet du Mottet

Mottet Hamlet
• Homemade gourmet cuisine in a friendly family atmosphere for lunch and dinner. Quick service at lunchtime to make the most of the ski day. Savoyard specialities in the evening. Afternoon with board games & snack. For families. **New owner.**
>Phone: 04 79 06 56 21- 06 72 18 52 91
>Facebook: Restaurant le chalet du Mottet

➤ L'Écuelle

Crève-Coeur hamlet
Restaurant located at the foot of the slopes, southfacing all day with a deckchair area. We welcome you from breakfast to dinner, non-stop service. We offer several types of dishes such as pizzas, burgers, salads, grills, children's menus and daily specials.
Phone : 04 79 08 66 12

➤ L'Étape

Le Bourg
• l'étape offers you its rotisserie and snacks with fresh and local products. Take advantage of the evening deliveries to receive all our pizzas kneaded on the spot and spread by hand with quality products as well as its menu.
>Phone: 06 49 76 49 29 - 06 38 36 64 12
Facebook: L'étape Valmorel

➤ L'Exquise

Le Bourg - round about
• Fast food. Tacos, burgers, paninis, kebab, sandwiches, salads.
Bar and giant TV screen.
>Phone: 04 79 00 98 95 - 07 66 33 35 39
>Facebook : L'étape Valmorel

➤ The Flambée

Le Bourg
• Crêperie, raclette cheese fondue, local specialties. Take away (pancakes, waffles, drinks). Open Saturday morning for breakfasts. Take away food.
>Phone: 04 79 09 81 61

➤ Le Jimbo Lolo

Le Bourg
• Discover the one and only Tex-Mex restaurant in Valmorel! Cocktails, tapas, steakhouse & Tex Mex! Latino atmosphere ! Indoor swings. Trendy address in Valmorel!
>Phone: 04 79 09 82 13 - 06 86 97 37 14
>Facebook: Jimbo Lolo



RESTAURANTS

➤ La Marmite

Le Bourg

- Restaurant in the main street, traditional cuisine, regional specialities with quality products, warm setting. Partnership with the gastronomic **guidebook**

Gault et Millau.

>Phone: 04 79 09 83 19 - 06 13 70 89 51

>Facebook : la Marmite

➤ L'Oxygène

La Charmette village

- Restaurant with modern cuisine, mountain products and proprietary wines. Cyril invites you to discover the products of the region cooked in a refined and inventive way. Fireplace and warm atmosphere.

>Phone: 04 79 09 81 80

>Facebook: L'oxygene

>Instagram: loxygenevalmorel

➤ Le Perce-Neige

Le Bourg

- Traditional and family restaurant offering a wide range of pizzas and all the Savoyard specialities! Cocktails' bar and specialities of rums arrangés. Takeaway meals.

>Telephone: 04 79 09 90 06 - 06 22 02 96 93

>Facebook: Le Perce Neige - Chez Michel

➤ Le Placard

Le Bourg

- Carole and Chris welcome you in a warm place to spend a pleasant time around good food and good wines. Food and wine to takeaway.

>Phone: 04 79 01 42 15

>Facebook: Le Placard Valmorel

➤ Le Refuge

Le Bourg

- A nice address to enjoy Saboyard or modern cuisine in a very warm and elegant setting with a jazzy atmosphere. Clement Brief Crendal has sublimated the old barn spirit of the house and composes, from local products, and with taste, a fresh, contemporary or traditional cuisine.

>Phone: 04 79 55 06 92

➤ La Table du Berger

Le Bourg

- Traditional savoyard cuisine. In a warm and friendly atmosphere reminiscent of our mountain chalets, you can enjoy homemade local cuisine made from fresh, seasonal produce.

>Phone: 04 79 09 81 94

>Facebook: La Table du Berger

➤ La Terrasse

Le Bourg

- We offer a real home cooking, refined, traditional and savoyard from fresh products only. Sunny terrace, room with panoramic view over the valley. After the meal, the terrace becomes a cosy bar until 2am.

>Phone: 04 79 09 83 17

>Facebook: La Terrasse Valmorel

➤ A DOUCY

➤ Le Blizzard

Doucy station ski resort - La placette

- The blizzard café is a bar pub & restaurant located in the heart of the resort, just a stone's throw from the ski lifts. You will find traditional cuisine, Savoyard specialities with good wines or good beers in a cheerful, relaxed and friendly atmosphere.

>Phone: 04 79 22 55 34

>Facebook: Bar Blizzard



MOUNTAIN RESTAURANTS



➤ L'Altipiano

Top of the Pierrafort gondola

- Easy pedestrian access. Playground for children. Lounge atmosphere, barbecue, solarium.
- >Phone: 04 79 09 86 31 - 06 60 85 85 22

➤ Le Prariond

Departure of the Prariond ski lift.

- Located in front of the Prariond ski lift and access via the Pierrafort gondola via the Oratoire slope or via the Altispace following the Morel slope. View over the Mont-Blanc. Panoramic room with fireplace. Home cooking. Evening parties on reservation.
- >Phone: 04 79 09 87 17 - 06 09 88 44 05
>Facebook: Le Prariond Valmorel
>Instagram : le Prariond

➤ La Vache Orange

Top of the Lanchettes chairlift

- Pedestrian and ski access. One of the most beautiful views of Tarentaise. Sun from morning to evening. Self-service restaurant with regional products. Beers' bar. Evenings upon reservation with ski descent with headlamps.
- >Phone: 06 62 45 12 89
>Facebook: lavacheorangevalmorel

➤ Les Voiles du Nant

Top of the Altispace chairlift

- a gourmet table, a lounge area and a solarium with a beautiful panorama. In addition to a gourmet food based on fresh products, you will enjoy a quality sandwich shop for those who are in a hurry, and a solarium for those who are a little less so. Access on skis or on foot.
- >Phone: 04 79 09 26 90
>Facebook: Les Voiles du Nant
>Instagram : lesvoilesdunant1919

PUB & BARS & NIGHT CLUB



➤ Le Café de la Gare

Le Bourg

• Pub-Bar open every day for festive evenings! Themed evenings, concerts, live sets, sports event broadcasts, evening blind tests.

Also enjoy a pool table, darts, a pinball machine, a table football..

>Telephone: 06 01 02 47 99

>Facebook: Le Café de la Gare

➤ Le pub de l'hôtel du Bourg

Le Bourg

• Terrace, fireplace. In the evening, the bar takes real lounge style. We offer a selection of cocktails made by our bartender, as well as a selection of whiskeys from all over the world.

Pub open to outside customers.

>Phone: 04 79 09 92 28

>Facebook: valmorel.hoteldubourg

➤ Le Sound Pub & Club

Le Bourg - La Tour

• Disco, bar, games room and sport events broadcasts. 2 rooms, 2 atmospheres:

- The Pub with billiards, darts, table football, karaoke, musical quiz

- The night club with its festive atmosphere.

Several themed evenings per week.

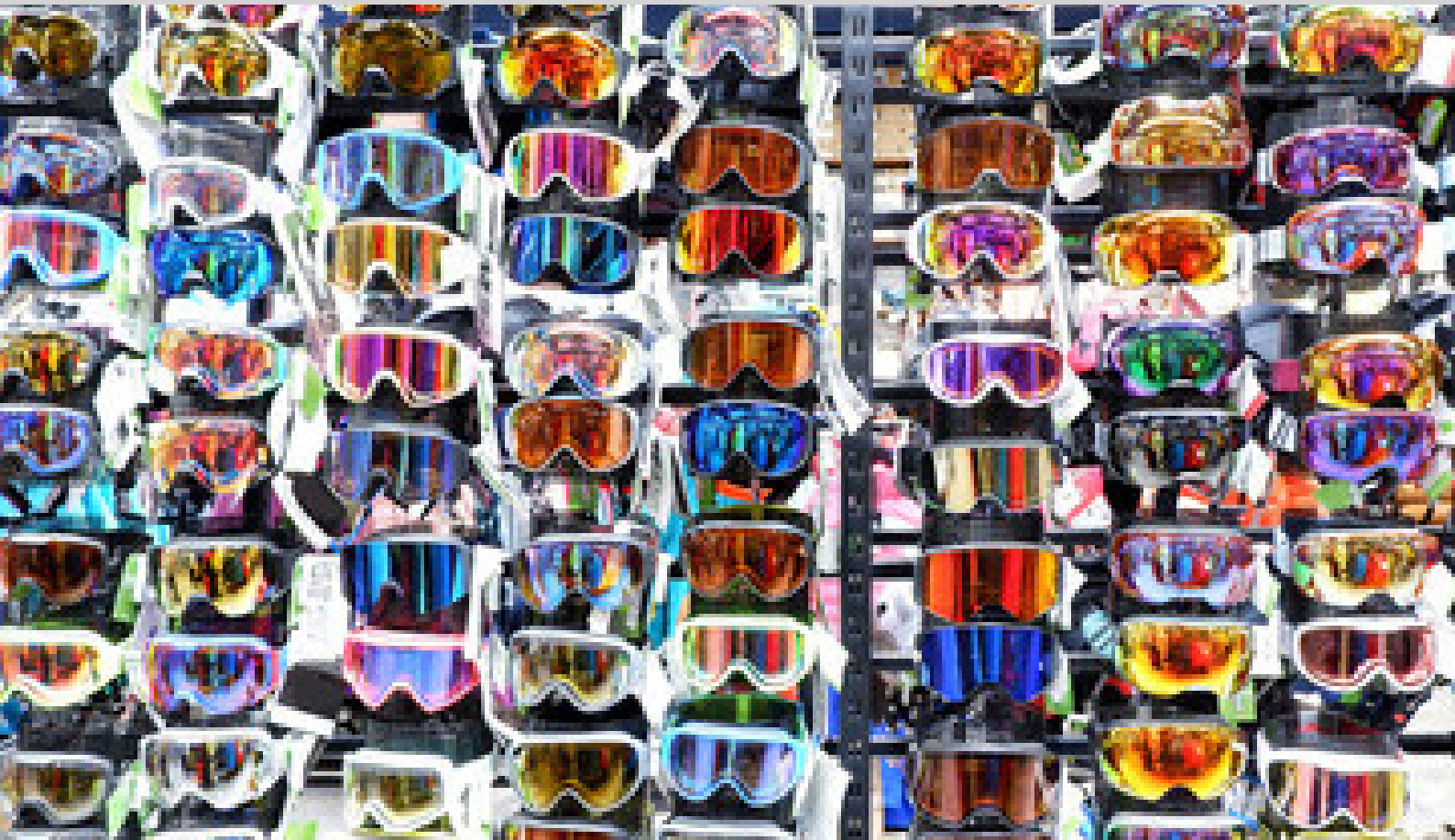
Free admission. From 8 pm to 5 am

>Telephone: 06 99 91 35 94

>Facebook: The Sound Pub & Club

>Instagram : soundpubclub

SPORT SHOPS



➤ Crève-Coeur Sports

Hamlet of Crève-Coeur

- Ski shop, rental and sale, located opposite the Tele-bourg of Crève-Coeur mid-station.
- In a friendly and professional atmosphere, Pierre Samson welcomes you 7 days a week with his team. Famous winter sports brands for skis and clothing. Bootfitting.
- >Phone: 04 79 09 85 58 - 06 40 66 70 16
>Website: www.creve-coeur-sports.com

➤ Deguili - Sport 2000

Le Bourg

- At the foot of the Altispace chairlift.
- Sale, rental and repair.
- >Phone: 04 79 09 83 55
>Website: deguili.sport2000.fr

➤ Intersport - Vibert Sports

Le Bourg

- More than 300 m² at your service. Sale. Rental of skis, snowboards, hiking equipment, snowscooter. Repair of the soles. Large choice of clothes and accessories!
- >Phone: 04 79 09 80 64
>Website: www.intersport-valmorel.com

➤ Murat Sports

Le Bourg

- At the bottom of the Altispace chairlift, Murat Sports offers sale, rental and repair for ski, snowboard, ski touring equipments. Rental of sledges-strollers and scooters. Murat Sports offers you everything to practice mountain sports for 45 years!
- >Phone: 04 79 09 81 83
>Website: www.murat-sports.fr

SPORT SHOPS

➤ Le Névé Sport - Netski

Le Bourg

• Practicing mountain activities, we can advise and guide you in the choice of your equipment so that it is the more suited to your level.

Sale. Rental. Repair. Ski, snowboard, ski touring & snowshoes rental.

>Phone: 04 79 09 81 60

>Website: www.netski.com/fr/stations/valmorel

➤ Skimium - Valmo Sports

Le Bourg

• At the bottom of the slopes.

Sale, rental, repair.

>Phone: 04 79 09 81 85

>Website: www.skimium.com

➤ Ski Republic - Ski Bike & Co

Le Bourg

• The right address in summer and winter!

For equipment rental or the purchase of accessories. For skiing in winter or mountain biking in summer, find us in a friendly and professional atmosphere, 7/7 in the main street.

>Phone: 04 79 07 14 56

>Website: www.sbcompany.fr

➤ Skiset

Le Bourg

• The professionals of gliding and bootfitting at your service! Ideally situated at the foot of the ski slopes with direct access to the Altispace chairlift. Selection of clothing and accessories from the best brands. Take advantage of discounts by booking on our website!

>Phone: 04 79 09 77 07

>Website: www.location-ski-valmorel.notresphere.com

➤ Ski Xperience

Le Bourg

• Ski, snowboard, snowshoe rental.

Ski Mojo Exoskeleton Specialist.

Clothing and accessories store, maintenance and repairs. Precision Ski Label.

Selection of outfits among the most major brands.

>Phone: 04 79 01 14 05 - 07 66 85 95 45

>Website: www.valmorel-ski-xperience.com

➤ La Trace Sports

Hamlet of Crève-Coeur

• Situated opposite the Pierrafort gondola, specialized in the rental and sale of ski and snowboard equipment.

We will be there to guide you through the choice of your ski equipment according to snow conditions and your level. Rental of sledges, snowshoes, baby carriers, toboggans-strollers. Bootfitting.

Winter accessories shop.

>Phone: 04 79 09 81 07 - 06 63 73 22 09

>Website: www.location-ski-valmorel.com

► IN DOUCY

➤ Choucas Sport Skiset

La Placette - Doucy

• On the Doucy square, Choucas Sport is the specialist in ski hire, sales sporting goods, sportswear, bootfitting.

The 3D scanner offers the best ski boot adapted to the morphology of your feet.

The Ski Mojo is for rent and for sale in our shop.

>Phone: 04 79 24 30 32

>Website: location-ski-doucy-combelouviere.notresphere.com

► IN AIGUEBLANCHE

➤ Ohspot - Sport 2000

Aigueblanche village (12km)

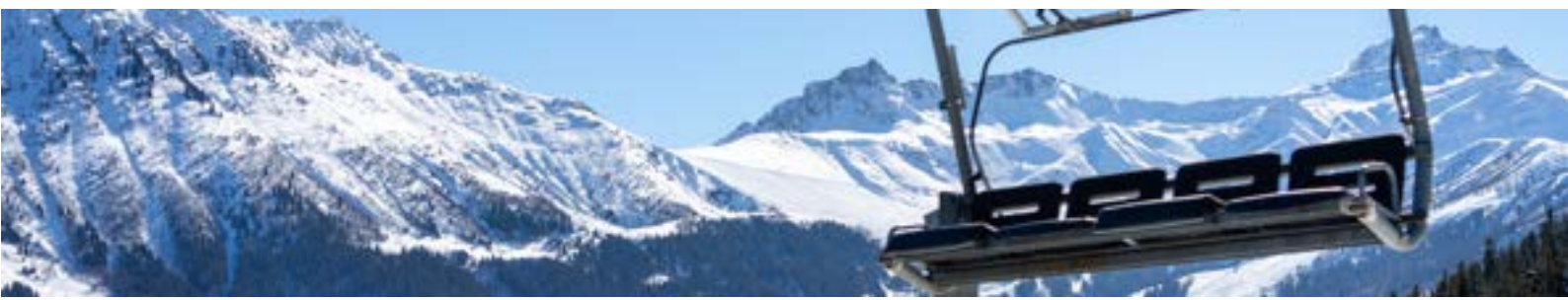
• Store open all year round for your ski and snowboard purchases and rentals. Snowshoes, ski touring equipment. Maintenance and repair of skis and snowboards. Bootfitting.

Summer: rental of electric mountain bikes and bicycles

Sale of hiking equipment.

Sale and rental of via ferrata equipment, sportswear, shoes.

>Phone: 06 79 18 80 94



| WINTER 2022-23 |

SHOPS & SERVICES



SHOPS & SERVICES

SHOPS

➤ Ambiance Altitude

Le Bourg

Decoration shop, wine shop, wine & tapas bar. In this space with a mountain spirit, you will find exceptional and unique decoration objects, a prestigious wine cellar of the most beautiful French domains and a relaxing space where you can have a glass of wine or a whisky of the Alps around the tapas made by the chef.

>Phone : 06 42 32 05 31

➤ Bingedible

Hameau de Crève-Coeur

At the foot of the Pierrafort gondola. CBD shop. CBD oils and herbal tea, flowers and honey. CBD chocolates and sweets. Home made. Open from 10am to 10pm

>Téléphone : 07 64 24 10 46

>Facebook : BING&DIBLE

>Instagram : GING.EDIBLE

➤ Bakery Pâtisserie Maryan

Le Bourg

• More than a point of sale, the Bakery Maryan is a real place of pleasure. It's a wide range of breads and also seasonal pastries, cakes and festive sweets, quality chocolates, jams... made on the site by our team.

>Phone: 04 79 24 17 70

>Facebook: Maryan Krawczak

➤ Moûtiers' Dairy

Le Bourg

• Taste the heritage, tradition and skills of local artisans. Beaufort cheese with a unique and refined taste, tomme, raclette, Savoy wines.

Vacuum packaging for travel.

>Phone: 09 66 96 82 71

>Website: www.beaufortdesmontagnes.com

>Facebook: Cooperative laitière de Moutiers

➤ La Ferme aux Gourmets

Le Bourg

• Sale and tasting of regional products, wines, honey, jams, cheeses, cold meats.

Preparation of raclette platters and Savoyard cheese fondue with loan of devices.

Homemade rillettes and pâtés, plain, with génépi, wild garlic ...

>Phone: 04 79 09 85 52

➤ Maison M Mountain distillery

Le Bourg

• Manufacture and sale of homemade liqueurs (digestives and aperitif wines), cellar with wine, mountain beers, spirits and whiskys from Savoie. Groceries (herbal teas).

All our products are mountain products.

Our process manufacturing is artisanal.

On line sales and delivery system.

>Phone: 06 07 89 55 38

>Website: www.distillerie-maisonm.fr

>Facebook : Maison M

➤ Le Refuge Gourmand

La Placette - Doucy

• Local produces of Savoy. Discover a choice of quality products: cold meats, wines, sweets, génépi ...

>Phone: 04 79 06 37 31 - 06 07 76 97 37

>Facebook: Le Refuge Gourmand

SERVICES

➤ Valmorel conciergerie

La Tour

• Services for private owners and holidaymakers, La Conciergerie de valmorel offers a wide range of services that will allow you to rent your apartment in complete serenity and to holidaymakers to make the most of their stay.

Maintenance, renovation, delivery of shopping at the arrival of your stay, delivery of skipasses...

>Phone: 06 09 71 36 65

>Website: www.laconciergeriedevalmorel.fr

➤ Hote Services

Hamlet of Crève-Coeur. Les Roches Blanches

• Services to owners and vacationers

Check in & check out, end of stay cleaning, linen rental and baby care's gear (baby cots and chairs, strollers, baby carriers, etc.). Linen, bedding cleaning, carpet shampoo ... Delivery.

>Phone: 04 79 09 80 93

>Website: www.hote-services.com



SHOPS & SERVICES

➤ Post Office

Les Avanchers-Valmorel Town Hall

- Open Monday to Friday from 9.15 am to 12.15 pm.
- >Phone: 04 79 00 76 39

➤ Luggages

Parking lot chalet. At the village entrance

- Open 24 hours a day, 7 days a week. Paid service 3.50€ per luggage
- >Phone: 04 79 09 99 91 and press 1

➤ Library, toys' library

Doucy

On the 1st floor of the tourist office.

- Accessible every day during office hours.

➤ Electric charging stations

Valmorel

- 1 terminal for all vehicles. Parking lot chalet.
- La Léchère les Bains - Hotel Radiana*
- 8 Tesla terminals and 1 terminal for all vehicles.

➤ Outdoor info terminal

Doucy

24 hours a day.

➤ Conference center

La Tour-Valmorel

- A professional complex at the height of your ambitions. Perfectly equipped with 3 seminar rooms, a cinema room and a reception area.
- >Phone: 04 79 09 99 91
- >Email: clehoux@valmorel.com

➤ Cash dispenser

- In Valmorel, Le bourg. Opposite the tourist office 24/7.
- In Doucy, la Placette. 24/7.

➤ Laundrette

Valmorel

Side road of Le bourg. Under the restaurant Le Placard

- Open 7 days a week from 7 am to 10 pm
- Doucy. La Placette.*
- 24 hours a day

➤ Valmorel police station.Gendarmerie

La Tour

- >Winter season phone number : 00 33 (0)4 79 09 80 95

➤ Valmorel local police station

La Tour

- >Phone: 00 33 (0)4 79 09 49 30

➤ Picnic room

Le Bourg parking lot. Room «Pour Tous»

- Open to skiers and walkers for picnic safe from bad weather. Free access.
- Water and free wifi access.
- Open from 9 am to 7 pm (contact the parking lot chalet, station entrance).
- >Telephone: 00 33 (0)4 79 09 99 91 and press 1

► Health

➤ Health and well-being office

The Health and Well-being space is a multidisciplinary space bringing together therapists in a dynamic and caring environment.

- >Phone : 06 10 70 00 88

>Web site : www.espace-sante-bien-etre-lequilibre.com

>Facebook : [ESFB.Equilibre.Valmorel](https://www.facebook.com/ESFB.Equilibre.Valmorel)

➤ Nursing office

Health center - Aigueblanche

- At the nurse's office on Monday, Tuesday & Friday from 7 to 8am & from Monday to Friday from 11.30am to 12.15pm.
- On appointment for home visits.
- >Phone: 06 47 16 43 07

➤ Medical Center

La Tour - Valmorel

Ground floor

- >Phone: 04 79 09 80 45

➤ Pharmacy du soleil

Le Bourg

- Pharmacy specializing in orthopedics and athlete support, naturopathy, phytotherapy, aromatherapy, organic dietetics, well-being ...
- From 9 am to 1pm & from 2 to 7.30pm.
- >Phone: 04 79 09 81 37



| WINTER 2022-23 |

WELL BEING



WELL BEING

➤ Bellicime

Le Bourg

• The institute offers aesthetic treatments, massages, hairdresser and semi-permanent nail polish . We offer you the Nougatine and Estime & Sens ranges for body and face, for men and women.

>Phone: 04 79 09 33 03

>Facebook: ValmorelBellicime

➤ Bulle de Détente

• Bulle de Détente offers you wellness massages at home and at the Health & Well-Being Equilibre Office. Each technique is an invitation to travel. Amma, Reiki, Tui-na, Ayurvedic, Californian, Swedish & Nuad Bo'Rarn. Let's try the **new Yoga & Massage session** for a new synergy.

>Phone: 06 18 40 68 63

➤ Classic and thermal DO osteopath

Valmorel and La Léchère-les-Bains

Athamante Residence n° 3

• My gentle osteopathic techniques aim to treat the cause of your physical and emotional pain (conscious or not). It is a real moment for yourself. We welcome you at your home or in the office, every day from 8am to 9pm.

>Phone: 06 10 70 00 88

>Web site : www.osteopathe-aquatique-savoie.fr

➤ Spa Montagne du Monde

MGM Anitéa Residence

• Spa Montagnes du Monde: your space of absolute relaxation. At the heart of the residence Anitéa, you have access to a top Spa range.

This space is conducive to most intense relaxation.

Sauna, hammam, indoor swimming pool, fitness.

>Phone: 04 79 04 05 20

➤ Spa Ô des Cimes

Residence CGH la Grange aux Fées

• Tailor-made treatments for an escape without limits. The Sothys and Charme d'Orient brands accompany you on a sensory & exceptional journey.

Child care from 6 years old thanks to "Toofruit" organic label products.

Open to everyone !

>Phone: 04 79 07 47 43

➤ Spa Sothys - Club Med

• "Haute Beauté" Face and Body.

Immerse yourself in a world of refinement and simplicity and live the ultimate experience high beauty face and body treatments.

>Phone: 04 79 41 61 00

➤ The Walking Elephant

Les Avanchers-Valmorel

• Pascale offers traditional thai massages on futon for deep relaxation and athletic recovery. Also practices rebounding for joint and muscle pain, at my home or at yours.

>Phone: 06 09 53 14 36

>Facebook: The Walking Elephant Massages Thai

➤ 3 Valley Yoga & Yoga Health Coaching

Les Avanchers Village

Kate offers private and group yoga classes. Yoga, breathing and meditation in the classroom or at home. Several styles of yoga adapted to your needs.

Hatha, Vinsana, Bowspring, Restorative, Yoga Nidra.

Consultations and coaching to guide you on your path to yoga and well-being. From 5 years old.

YogaMass - Massage with yoga. Schedule your YogaMass session for a new form of relaxation for body and mind.

>Phone : 07 78 24 59 65

>Facebook : 3valleesyoga





Le RADIANA

SPA - RESTAURANT

Hôtel et Résidences

**Entrée Spa
À partir de 25€**

Au pied de la station de Valmorel,
accordez-vous un moment de douceur

spa Õ des Lauzes

1500 m² d'espaces aqua-ludiques
en eau thermale et jacuzzi extérieur.

9 cabines de soins - 7 de balnéothérapie



Consultez notre Spa menu

Restaurant

l'Õ à la bouche

Découvrez la carte gourmande et de saison.
Notre offre Spa et déjeuner à partir de 50€



■ **Spa Õ des Lauzes**

04 79 22 44 16

■ **Restaurant l'Õ à la bouche**

04 79 22 44 08



radiana@lalecherelesbains.com



La Léchère-les-Bains THERMAL BATHS

Valmorel • côté bien-être

➤ Hotel Radiana 3 *

La Léchère-Les-Bains

• Hotel Radiana will delight all tourists and curists in search of comfort and tranquility.

110 spacious hotel rooms and suites renovated with respect for the architecture and the soul of the place. Discover the restaurant **L'eau à la bouche** and its Savoyard bistronomic cuisine or dietetic, the thermal water **spa Ô des Lauzes**.

Direct access to the thermal baths.

15 km from Valmorel. Valmobus shuttle.

>Phone: 04 79 22 61 61

>Website: www.hotel-radiana.com

➤ Thermal Spa - Ô des Lauzes

Hotel Radiana - La Léchère-les-Bains

• 1500 m² spa supplied with thermal water.

Massages, facials or body treatments.



Balneotherapy treatments.

The aqua-ludic part is a succession of pools conducive to relaxation and well-being

Indoor and outdoor Jacuzzi.

An ideal place to have time for yourself.

Label Spa de France 5 Lotus.

>Phone: 04 79 22 44 16

Medical thermal baths open between March 27 and October 21, 2023

The events of the thermal season

- «La guinguette» once per stay in the thermal park.
- A show offered per stay

➤ **July:** July 14 National Day Celebration. Festival of the Madeleine pass. «The Acousticimes» acoustic music festival.

➤ **August:** Festival of the thermal park.

➤ **October:** Gastronomy's week. EDF Trail of Aigueblanche.

Good Deal

The **Activ Pass** to fill up on activities!

Valid for 3 weeks. 26€

- Discounts on activities
- 1 show
- Free access to the media library & library
- Swimming pool tickets and mini-golf at the Morel swimming pool
- -10% on the Tourist Office shop from La Léchère-les-Bains
- a free home-made **taraxacum aperitif** for each meal consumed at the restaurant «Chez Fred» in Nâves
- A free non-alcoholic aperitif for a dinner or lunch at the restaurant «l'Ô à la bouche»

Shuttles

• Throughout the winter season and summer months, **Vallées'Bus** shuttle between La Léchère-Les-Bains and Valmorel for enjoying a day of skiing, a walk or a moment of well-being at the thermal spa.

Tourist office La Léchère Les Bains

• Opening hours during the thermal season : every day from 9 am to 12 pm and 2 to 6 pm.

• Off-season hours: Monday to Friday 9 am to 12 pm and 2 to 5pm. Closed on public holidays.

Closed during the Christmas holidays.

>Phone: 04 79 22 51 60.

>Email: lalecherelesbains@valmorel.com

>Website : lalecherelesbains.valmorel.com

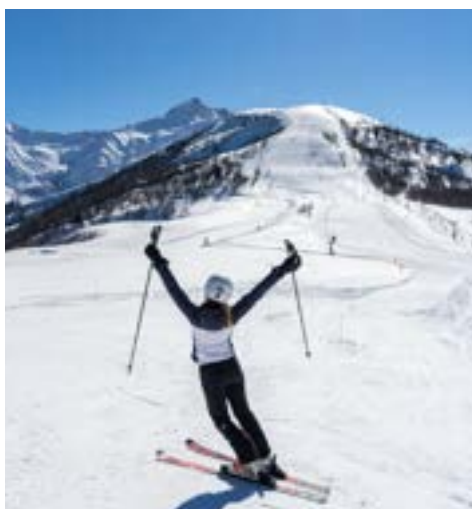


| WINTER 2022-23 |

ACCOMMODATION



BOOK YOUR STAY ON LINE



Hiver comme été, bénéficiez
de l'offre de Valmorel
et organisez votre séjour
depuis chez vous !

➤ Réservez votre
hébergement

(hôtels, résidences de tourisme,
appartements ou chalets)

et ajoutez à votre panier votre
place de parking, vos **activités**,
vos **forfaits de ski** et
vos **cours de ski**.

“

*Simple, rapide et sécurisé !
Avec la plateforme de Valmorel,
j'organise mon séjour de chez moi
en toute tranquillité !*

”

| Plateforme de réservation |

reservation.valmorel.com



ACCOMMODATION

REAL ESTATE AGENCIES

➤ GSI Immobilier

Place du Morel - Valmorel

- Our perfect knowledge of the territories, of the rental property stock offers you a suitable vacation rental. GSI Immobilier offers more than 200 apartments ranging from studios 2 people to chalet with breathtaking views.

>Valmorel Reception Tel: 04 79 09 94 40

>Call centre : 04 79 22 86 86

>Transactions: 06 71 78 89 99-06 15 31 94 98

>Website: <https://cutt.ly/Agence-Valmorel>

➤ Real estate Immobilier Soleil

Le Bourg - Valmorel

- Family agency, specialist in Valmorel and its valley for 29 years, we are at your disposal for advice, estimation, expertise, purchase, sale, renovation of your property. All inclusive offers with skipasses, half-board, ski lessons, carpark...

>Phone: 04 79 09 83 77

>Website: www.immobilier-soleil.com

➤ Maeva Home

Athamante residence

- Rental of your flat. Connected to the largest European distribution networks, Maeva Home relies on its online marketing expertise, pricing strategy, management of holidaymakers. Animals accepted according to accommodation. Additional services on request. sales transactions.

>Phone : 04 79 09 83 07- 06 07 14 67 55

>Web site : maeva.com

➤ Valmorel Location

Le Bourg - Valmorel

- Since 2001, the Valmorel Location agency is at your service all year round to help you to organize your stay in Valmorel and you support in your purchasing projects or of real estate sales. A la carte service: reservation cards for various activities, location household linen, end-of-stay cleaning, etc. Contact us and let us do it!

>Phone: 06 45 09 31 82 - 04 79 09 05 88

> Website:

www.valmorel-location-immobilier.com

HOTELS

➤ Hotel du Bourg 3 *

Le Bourg - Valmorel

- Charming hotel, Savoyard style, ideally located in the center of the Bourg morel street. Near restaurants, shops and the ski slopes.

Lounge / Pub with a fireplace. Wifi and sauna free for residents.

Opposite the Piou Piou club.

Reception 24/7.

>Phone: 04 79 09 92 28

>Website: www.hoteldubourg.com

➤ Hotel Chalet du Crey 2 *

Le Crey - Les Avanchers-Valmorel

- Treat yourself and spice up your life for a week of skiing or a mini-ski stay.

Located 4 minutes from the center of Valmorel,

The Hotel Chalet du Crey offers you a great welcome, a family atmosphere and careful staff. Panoramic Terrace.

>Phone: 06 25 83 12 06

>Website: www.chaletducrey.com

➤ Hôtel Le Cheval Noir

Les Avanchers-chef-lieu

Open all year round. 5 bedrooms with showers. Takeaway from the restaurant possible. Pets allowed.

>Phone : 04 79 09 89 89

>Mail : auberge-chevalnoir@orange.fr

>Facebook : Auberge du Cheval Noir

➤ Hotel L'Oxygène 3 *

La Charmette - Les Avanchers-Valmorel

- Hotel-restaurant located in the heart of the hamlet La Charmette and enjoying an exceptional view on Valmorel village and the surrounding mountains.

We welcome you in a warm and refined place.

Sauna, hammam and outdoor spa.

Free shuttles to Valmorel. 400 m from Le Rocher ski lift.

>Phone: 04 79 09 81 80

>Website: www.oxygene-hotel.fr



ACCOMMODATION

RESIDENCES

➤ The Club Med Chalets 5*

Hamlet of Bois de la Croix - Valmorel

• Unique high-quality experience with these all-inclusive apartment-chalets. Test **the 5 trident area** which overlooks Valmorel. With terraces, a living room with fireplace and a ski-in ski-out departure, this exceptional product will allow you to share special moments with family or friends.

>Phone: 04 79 41 61 00

>Website: www.clubmed.fr/r/les-appartements-chalets-de-valmorel/s

➤ Residence CGH La Grange aux Fées 4 *

Hameau Fontaine - Valmorel

• La Grange aux fées, located at the start of the Lanchettes chairlift, enjoys a privileged location at the foot of the ski runs. The spacious flats can accommodate up to 10 people and perfectly combine authenticity and modern facilities. Take advantage of the **wellness area** with heated indoor swimming pool, children's pool, hot tubs, saunas and hammam.

>Phone: 04 79 07 47 43

>Website: www.cgh-residences.com/hiver/residences/la-grange-aux-fee-32

➤ Résidence MGM Anitéa 5*

Rond-point du bourg - Valmorel

• An intimate residence of 40 flats with balcony located at the foot of the slopes and in the heart of the village! Anitéa offers a multitude of services including its wellness area with free access to the 1000m² wellness centre and a heated indoor swimming pool. Access to the sauna, hammam, hot tubs, Nordic bath, sensory shower, fitness room and fitness room!

>Phone : 04 79 04 05 20 - 04 50 27 22 72

>Web site : www.mgm-hotels-residences.com/residence-residence-anitea-valmorel

➤ Résidence La Placette 3*

Hameau de Planchamp - Valmorel

• The La Placette residence is located near the ski slopes and offers apartments classified from 1 to 3 * for 2 to 8 people. The 14 apartments of La Placette residence welcome you with the greatest comfort.

Ideally located at Planchamp hamlet, close to the ESF gatherings (group lessons / Daycare), from the bottom of the Altispace chairlift, the resort center and shops.

>Phone: 00 33 (0)6 19 24 22 67

DOUCY STATION

➤ Les Résidences Vacancéole

Doucy - station

• An exceptional holiday thanks to rental of apartment-chalets in Doucy-Valmorel. Located at the foot the slopes of the Doucy resort, connected to Valmorel, your holiday residence welcome you in its authentic universe.

Résidence La Duit **3*** - Résidence Beauregard **3***

Résidence Le Sappey.

>Phone : 04 79 75 75 20

>Web site : www.vacanceole.com/villes/61-valmorel

THE HOLIDAY CENTRES

➤ Club Med Village 4*

Hamlet Le Bois de la Croix

• 4 trident village in all inclusive formula, at the bottom of the ski slopes. A top & unique range experience with a wide choice of accommodation. Club or Deluxe rooms and 5 trident space suites.

Babies to teens's clubs. Discover The Lodge, the private 5-trident area.

Spa: Club Med Spa by Sothys.

>Phone: 04 79 41 61 00

>Website: www.clubmed.fr/r/valmorel/w

➤ Villages Clubs du Soleil 3*

Hamlet La Forêt

• full of charm and conviviality place in a All Inclusive formula with children's clubs from 4 months and full board catering.

Lunch on the terrace overlooking the ski slopes.

Kids 'and teens' club. Ski in & ski out.

>Phone : 04 79 09 87 77 - 0825 802 805

>Website: cutt.ly/VCS-VALMOREL---HIVER

➤ La Vigogne / Boarding House

Le Pré village

• Large sunny chalet not far from the ski area & nordic area : downhill skiing, cross-country skiing, snowshoeing, walks or hikes. Full board and half-board, snacks, possibility of picnic at noon.

A la carte stay. Kids club.

Free shuttles nearby to Valmorel.

>Phone: 04 79 09 81 89

>Website: www.la-vigogne.com

ACCOMMODATION

DOUCY STATION

➤ Village Club Miléade 3 *

Doucy station

- All-inclusive club, located nearby the ski lift. Free children's clubs from 3 months and during school holidays for 6 to 17 year olds. Adult entertainment during. Wellness area with baths, hot tubs, sauna and hammam in free access.

Ski equipment rental on site.

>Phone: 04 87 75 00 58

>Website: www.mileade.com/destinations/snow/valmorel-doucy/

UNUSUAL ACCOMMODATION

➤ The tree house

Valmo'Bourricot farm

Hamlet of Crève-cœur

- In an exceptional setting, the «Cab'Ane» takes place in the heart of the forest and offers you a breathtaking view on la Lauzière mountain range and the surroundings of Valmorel.

A true cocoon of well-being perched 4 meters high, made of high quality materials, for 2 adults and 1 child under 6 years old.

The Added Value: the cozy roof top of 15 m².

Services included: breakfast with local products, bed linen.

>Website: www.valmo-insolite.fr

PRIVATE OWNERS ACCOMMODATION

A LIST IS AVAILABLE ON LINE
OR
ON LINE BOOKING
www.valmorel.com



SEMINARS, TEAM-BUILDING, INCENTIVES

TEAM

BUILDING

Are you on holiday in Valmorel?

Think about introducing your employees to your favourite destination!



A tailor-made offer adapted to your needs!

We work with the best specialists in the destination to accompany and guide you in planning your stay!

SUMMER ACTIVITIES & EVENTS



SUMMER ACTIVITIES & EVENTS

MOUNTAIN BIKE PARK
365KM OF TRACKS
27 TRACKS FOR ALL LEVELS
LIFTS OPEN ALL WEEK
GOOD BARGAINS ON WEEK-ENDS
FROM 15€/DAY
FREE SHUTTLES FROM THE VALLEY BACK TO VALMOREL



VALMOREL

BIKE PARK

Bike Park **365Km** balisés
27 parcours tous niveaux !

Remontées mécaniques ouvertes **7j/7**

Enduro des thermes **17km** de descente !

6 pistes de DH, **9** parcours enduro, **8** parcours rando

BONS PLANS VTT

Des navettes VTT gratuites !

*Samedi ou dimanche le forfait VTT dès **15€/J***

Mad'Trail

L'ÉVÈNEMENT TRAIL DE VALMOREL

**15-16 JUILLET
2023**

**5 COURSES
DE 3 À 63KM**



**MAD MINI
KID'S ET
MAD KID'S**



Mad'Bike

L'ÉVÈNEMENT VTT DE VALMOREL

CHAMPIONNAT REGIONAL D'ENDURO

**ÉTÉ
2023**



TAXIS & CAR PARKS

Les transports

➤ Albatrans SARL Aigueblanche

- > Phone : 06 16 55 43 22 - 06 15 38 57 98
- > Web site : www.taxi-moutiers.com

➤ Allo Taxi Valmorel

- > Phone : 04 79 24 10 07
- > Web site : www.morard-taxi.eu

➤ Autocars Deslandes Doucy Bus

- > Phone : 04 79 24 06 94
- > Web site : www.doucybus.com

➤ Deslandes Taxi

- > Phone : 06 50 56 23 54
- > Web site : www.transportsdeslandes.com

➤ Taxi Sylvain

- > Phone : 06 80 06 26 34
- > Web site : www.allo-transports-sylvain.fr

Car parks

➤ Valmorel Gestion

- Outdoor parking lots, covered parking lots.
Office at the resort entrance open 7 days a week & 24hours
- > **Special rate:** Weekly tickets. Online bookings only.
- > **Good deal on Saturday** outdoor parking lots:
Exclusively off school holidays 9 am to 5.30 pm
- > **Phone** : 04 79 09 99 91 and press 1
- > **Website:** www.valmorelgestion.com

➤ Motorhome carpark

- Crève-Coeur hamlet in front of the residence Le Pierrer*
- Water point + emptying area 5 minutes away
(at the level of the public toilets).

➤ Doucy

- Free parking for cars and coaches.
- Motorhome carpark : coaches parking. No equipment.

ALL WINTER VALLEY BUS LINK >> SKI RESORT

- Tickets on sale to the driver
- Easy Access
- Fully available & usable by everyone
- Link from ski resort to the bottom valley
- Access to the Spa in La Léchère les bains thermal spa
- Access to the cross-country ski resort of Nâves



SHUTTLES

ZEN BUS App

A real time bus location information
Let's stay Zen on snowy days!



Valmorel Shuttles

- Use the free inter-village Valmobus shuttles and make your trips easier for your activities! 7/7 days.

Bus line 1 : Aigle Blanc >> Valmorel Club Med



Bus line 2 : Le Fey-Dessous >> Valmorel Le Mottet



Bus line 3 : Fontaine >> Mottet



- This bus runs from Sunday to Friday

Doucy to Valmorel shuttle

An afternoon break in Valmorel
with **Doucy-Bus**.

On Wednesdays afternoon.

Departure 2 pm. Return To Doucy 5
pm. Payment to the driver. 5 adults
minimum.

Booking from the tourist office

>Phone: 04 79 24 19 43

Shuttles from/to Moutiers bus & train station

information & booking on
www.altibus.com



FIND ALL SHUTTLE SCHEDULES
on www.valmorel.com
and on the QR codes displayed in the village