



**WINTER 2023 - 2024**

# “VALMOREL LA BELLE”

The 'wow' effect !

---



# THE GRAND DOMAINE



**165** KM  
OF PISTES / **3600** ha

**47** LIFTS

**103** marked and prepared pistes

**8** black pistes

**20** red pistes

**48** blue pistes

**27** green pistes

1250 m → 2 550 m



## A FUN SKI AREA

18 fun zones including :  
boardercross, snowpark,  
snowcross, freeride ...



## THE PIRATE VILLAGE

A huge castle awaits the young pirates!

Captain Freebooter will lead them on a treasure hunt...

A turnstile, a game of chamboule tout, slides, an entrance totem pole, secret passages, a picnic and relaxation area for parents, a play area for 2-10 year olds... are also free to discover in the pirate village located in the Arnouillaz sector, accessible by the new Planchamp cable car on skis, snowshoes or on foot!

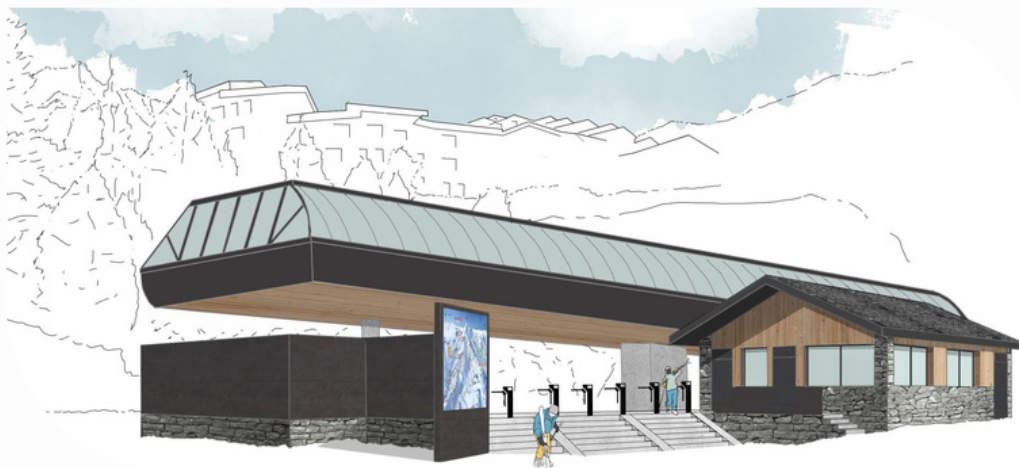
## A LINKED SKI AREA

### Celebrating its 40th anniversary in 2024!

4 villages are linked to the ski area :  
Valmorel, Saint-François Longchamp, Doucy and Celliers



# ENTERING A NEW ERA



## New gondola lift in the resort centre

Over the last 7 years, the Valmorel ski area has invested over €40 million to modernise and improve the safety of its ski lifts, snowmaking facilities and slope profiles. This year, the big news is the replacement of the main access route to the ski area from the village of Valmorel up to an altitude of 1920m with the new Planchamp gondola lift. This replaces the Altispace bubble chairlift. This is the first gondola lift "Made In France" by Savoie-based manufacturer POMA.



### Access to the heart of the ski area in 5 minutes

The Planchamp gondola lift will make it easier for skiers to get to the Grand Domaine, with a maximum capacity of 3,600 people per hour (compared with 2,400 for the old chairlift) and a speed of 7 metres per second, meaning that it will take less than 5 minutes to get to the start of the pistes at the top. This new lift will be one of the fastest in Savoie. The gondolas will be able to accommodate up to 10 people.

### A gondola lift that heats the ski lift premises

In addition to its speed, the Planchamp gondola has a unique energy innovation: a system for recovering the hot air produced by its drives will be used to heat the operators' rooms and the staff canteen.

Valmorel, a pioneering resort, had already tried this out on the La Biollène and Mottet chairlifts and the Celliers gondola lift. Now it's the turn of the Planchamp gondola to adopt this process.

### Better integration into the landscape

The work involved in creating this gondola lift meant the demolition of the old intermediate stations, the burial of the high-voltage line, and the removal of 5 pylons. Today, the number of pylons is 13, compared with 18 previously.

75

Cabins

1820m

length

7m/S

Max. speed

4min  
40sec

Journey time



---

# A DESTINATION CONCERNED

## Valmorel and its surroundings

Valmorel is very sensitive to environmental issues and does everything it can to preserve its natural jewel.

In particular, the ski area and the resort are working with local target groups.

The resort has set up partnerships with operators such as Skimania and encourages car-sharing and bus travel.



### **VALMOBUS & VALLÉE'BUS**

The Valmobus buses link the villages of Les Avanchers to each other and to the resort, making it easy for holidaymakers and local residents to get around. The buses run on AD blue to limit their carbon footprint. Valmorel offers this service free of charge to encourage collective travel and reduce car use. The frequency of service depends on the line used, with the most regular service running every 30 minutes or so, depending on the time of day.

The Vallée'bus shuttle runs between La Léchère-les-Bains and Valmorel. It allows holidaymakers to get around the resort at a reduced price (€1 or €2), without having to queue up with cars, and makes it easier for users to get around without having to drive on a snow-covered road. It's a social and environmental initiative that benefits everyone, including the valley's residents and seasonal workers. It makes 4 return trips a day.

### **SNOWSAT TECHNOLOGY**

The Valmorel ski area is equipped with the Snowsat system, which precisely measures the volume of snow on the slopes in order to draw up an efficient and precise grooming plan that limits the number of groomer passes. This also limits snow production requirements. Tried out on the Valette piste leading to the Madeleine, this has helped to reduce the annual volume of artificial snow produced on this piste by 30% between 2021 and 2022. This process will be extended to the entire ski area to help reduce energy consumption.

### **ENVIRONMENTAL OBSERVATORY**

In partnership with the environmental consultancy EPODE, the ski lift company is studying and mapping its territory and its evolution in order to reference the fauna, flora and sensitive environments of the ski area. The findings of this observatory are systematically taken into account in new development projects, with a view to preserving sensitive species and areas.

### **POLYAIR SYSTEM**

The Polyair system, installed on the ski lifts, is a process that recovers the hot air generated by operations via variable speed drives in order to heat the ski lift operators' rooms and the refectory. Valmorel was a pioneer in this field, as the prototype was tested on one of the Valmorel lifts before being rolled out to other resorts.

Today, 4 ski lifts benefit from it: Biollène, Mottet, Celliers and the brand new Planchamp gondola.



---

# FOR SLOW ADDICTS



**6h** From Paris

**2h** From Lyon

**4h** From Marseille

**1st station  
station at the  
entrance  
to the  
Tarentaise**

**Controlled  
architecture**

**Pedestrian  
resort**

Valmorel is a resort on a human scale, with the advantage of being the first resort to enter the Tarentaise valley. So it's very accessible and avoids a lot of traffic jams!

It's a family resort where there's something for everyone, with a modernised ski area, slopes that are accessible to all and sporty, as well as après-ski activities..

Valmorel is a 4th generation village resort, created in 1976. The architecture here is masterful, with 3 to 4 storey chalets spread over several hamlets and built using noble materials: gable roofs covered with lauzes, stone facing on the walls, trompe-l'œil painted decorations and a profusion of wood.

*In 2021, a documentary was filmed by télégrenoble on the architecture of the resorts, particularly Valmorel. To watch it, click here (Valmorel at 25min):*

[https://www.telegrenoble.net/replay/documentaire\\_77/documentaire-architecture-et-stations-2021\\_x81vi2b.html](https://www.telegrenoble.net/replay/documentaire_77/documentaire-architecture-et-stations-2021_x81vi2b.html)

Valmorel's two main assets are calm and conviviality. This is thanks to the design of the village, built around a pedestrianised street, the Rue du Bourg, lined with shops with colourful façades and signs where holidaymakers can stroll in peace and quiet. Surrounding it are 'hamlets' where you'll find accommodation and a few additional shops, all linked to each other and to the centre by footpaths and the télébourg (pedestrian cable car). No more need to take the car.

Traffic between Les Avanchers and La Léchère-Bains is provided by the Vallées'bus.



# SNOW VERSION



Km of slopes

**165**

*40 years  
old  
of the  
Grand Domaine*

**The Grand Domaine is 165 km of open**, varied slopes accessible to all, with breathtaking views of Mont Blanc. The Grand Domaine links the north-facing slopes of Valmorel, Doucy and the Col de la Madeleine, guaranteeing plenty of cold snow throughout the season, with the more south-facing Saint-François Longchamp in the Maurienne. With its forests, gentle mountain pastures, sporty slopes on the summits and fun areas, Valmorel offers all the pleasures of skiing.

## **Early booking offer on Valmorel - Le Grand Domaine stay packages**

(from mid-September and before 15/11/2023, exclusively on [skipass.valmorel.com](https://skipass.valmorel.com)) :

\* **-15% on the 6-day pass or more** for stays from 06/01 to 09/02/24 (last day of skiing) and from 09/03 to 12/04/24.

\* **10% off the 6-day pass or more** for stays during the Christmas holidays from 23/12/23 to 05/01/24 or the February holidays from 10/02 to 09/03/24.

## **Weekend offers (exclusively on [skipass.valmorel.com](https://skipass.valmorel.com)) :**

\* **-50% on Saturdays** outside school holidays and **-30% on Sundays**.

\* **-30% off on Sundays** outside school holidays

## Behind the scenes in the ski area

### Free discovery

Visit to the  
snow  
factory

Discover the secrets of how artificial snow is made, what it's used for, snow gun technology, the impact on the environment... in the company of mountain and slope professionals, all on skis!

*Free (provided you have 1 valid ski pass).*

*Access from age 12 (blue run level required)*

Visit to a ski  
lift station

Valmorel's ski lift service is offering you a behind-the-scenes look at a ski lift, with a visit to the station of the new Planchamp gondola! It's a great opportunity to understand the inner workings of the system and talk to professionals in the sector.

Snow  
groomer  
outing

The snow groomer, a fascinating machine! Young and old alike dream of climbing aboard this machine that lights up the slopes at night. At Valmorel, you can find out more about the groomer's job and climb aboard to go behind the scenes of slope preparation.

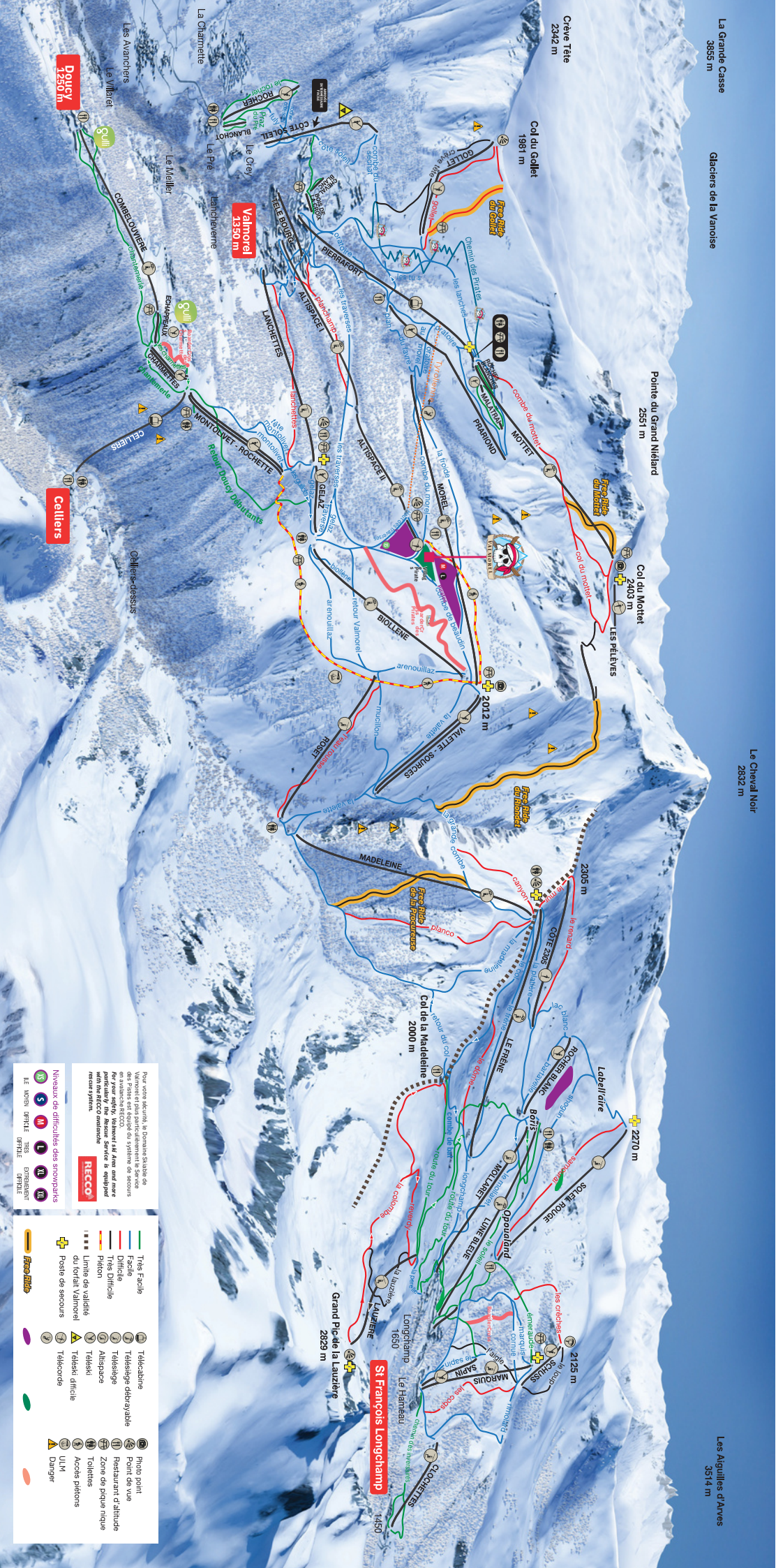
Registration required at [skipass.valmorel.com](https://skipass.valmorel.com), followed by a draw!

On  
the trail  
of the  
trackers

Valmorel offers a privileged opening of the pistes with the piste patrollers: Check one or more pistes, make them safe, visit the rescue post, visit and explain the avalanche triggering post with the catex!



# SNOW VERSION



La Grande Casse  
3893 m  
Glaciers de la Vanosse

Le Cheval Noir  
2832 m

Les Agulles d'Arves  
3514 m

Pour votre sécurité, le Domaine Skiable de Valais Plateau est équipé du système de secours en avalanche RECCO. Le skieur est équipé d'un système de secours RECCO. Le skieur est équipé d'un système de secours RECCO. Le skieur est équipé d'un système de secours RECCO.

**RECCO**

Niveaux de difficulté des snowparks

LE NOIR, GRNDE, TRS, OUVERT, OFFICIEL

	Très Facile		Telecabine
	Facile		Telecabine élargie
	Difficile		Teleseige
	Très Difficile		Platane
	Limite de validité du forfait Valnoirel		Altispace
	Poste de secours		Teleseige difficile
	Free-Ride		Telecabine

	Point de vue		Point de vue
	Restaurant d'altitude		Restaurant d'altitude
	Zone de parking		Zone de parking
	Toilettes		Toilettes
	Accès piétons		Accès piétons
	ULM		ULM
	Danger		Danger

# WOW FEELING

Valmorel is a family resort where activities are in full swing! Whether you're 4 or 90, there's something to suit every taste and every sensation!

## Mountain kart

We've all heard of go-karts, but we're not so familiar with snow karts! A fun activity where you race down a track at the top of the Pierrafort gondola, behind the wheel of your 3-wheeled, motorless machine, after the ski area has closed. Small privileged group of 3 people.



### French Ski School

04 79 09 81 86

Every evening at 16h45 - 35€

## Fatbike

At the end of the day, after the pistes have closed, the ski school offers a 2-hour ride on a Fat Bike through the forest. The Fat Bike's big notched wheels mean you can go anywhere, from the forest to the slopes and trails. Get ready for adventure!



### French Ski School

04 79 09 81 86

Every evening - 40€

## Yooner

A fun-filled moment with friends or family awaits holidaymakers with an après-ski Yooner outing! This machine offers incomparable sliding sensations close to the ground.

Meet up at the Pierrafort gondola for a descent of the Les Lanches blue run in small groups from 8 years upwards.



### French Ski School

04 79 09 81 86

Every evening at 16h45 - 18€



## Double zip line

The biggest double zip line in France, and one of the biggest in Europe, is in Valmorel!

Side by side, with speeds of between 70 and 100km/h, a length of 1.4km, a height of 150m and a 250m drop, the Valmorel zip line offers gentle sensations and a breathtaking 180° view of Mont Blanc, Crève tête and the Nielard!

Book online or directly on site if available.



### Magic adventure

[www.magicadventure.org/la-tyrolienne](http://www.magicadventure.org/la-tyrolienne)

Everyday except monday - 35€

## Airboard

Airboarding is the fun activity for young adults looking for speed and fun!

You slide down the slopes on a sort of buoy directly on your stomach as soon as the ski area closes.

Head for the Pierrafort gondola to hurtle down a 500m vertical drop!



### French Ski School

04 79 09 81 86

Every evening at 16h45 - 20€

## Biathlon et stages kids

The ESF is offering an introduction to laser rifle shooting in the Piou Piou snow garden on Tuesdays and Thursdays in Valmorel and Wednesdays and Fridays in Doucy at 5pm for a fun family activity after skiing (€12/person for 30 mins).

In the Nordic ski region of Nâves, kids' courses are being organised on 20, 22, 27 and 29 February 2024. Supervision, skis, rifle and passes included in the half-day price of €30.





# WOW CONTEMPLATION

Valmorel is a Soyarde resort with a certain charm. There are plenty of activities to make the most of the beauty of the village and the snow-capped mountains!



## Sledge dogs

In Valmorel, let yourself be carried away by the sled dogs or put yourself in the musher's shoes to become a real adventurer!

A 30-minute or 1-hour ride is enough to give you a complete change of scene !



### Escapades nordiques

07 85 99 61 90

[escapadesnordiques.fr](http://escapadesnordiques.fr)

Every day - From €140 to €380

Prices depend on the weather and the number of people in the sleigh.

## Snowshoe outing "The old villages"

Florent Espagnac takes snowshoe enthusiasts on a tour of the many villages in the Morel Valley.

The walk will take you through the forest to the villages, where you'll discover the history of the ancient people who populated (and populated) the valley.



### Florent Espagnac

Wednesday mornings -

23€/children - 25€/adult

## Outings in Swincar

This winter, you'll be able to experience a Swincar ride in Valmorel!

These strange machines are 100% electric, silent and emission-free.

The 4-wheel drive and pendular system will take the curious on a snowy ride close to the ski area, between open paths and forest. An added bonus is that this machine is accessible to people with reduced mobility.

Rides of 1 to 3 hours, solo or in pairs.



### Spyder Mountain

06 12 45 43 77

Everyday - From 75 to 210€

## Paragliding

A paragliding flight in winter is even more magical than in summer. It's much rarer to see the snow-covered peaks from above!

Join ESF instructors for a gentle 10-minute flight on skis from the top of the Planchamp gondola.



### French ski school

04 79 09 81 86

Everyday - 65€



---

# AS IT IS B(OW)

Valmorel and its valley are full of little cocoons where you can spend a pleasant moment. Whether you're looking for an overnight stay in the mountains or a place to sample local produce, these charming places are sure to delight visitors.

## Overnight stay in a cabin and meal in a yurt

For an original, cocooning evening, the tree house and yurt are the perfect plan!

**The tree house** offers a unique experience 4 metres high in the forest, not far from the resort centre, but enough to make you feel at one with nature.

It is equipped with dry toilets and solar panels for lighting and heating. The hut can accommodate 2 people and potentially a child aged between 6 and 10.

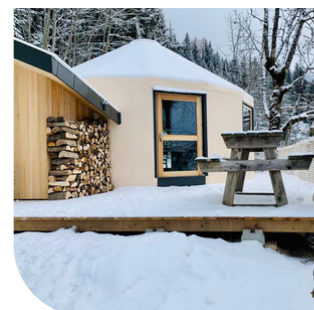
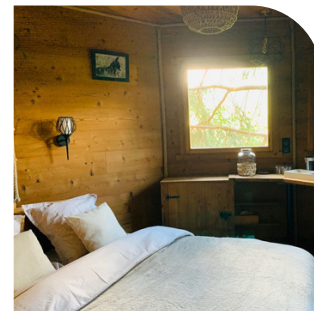
**The yurt** welcomes visitors to the hut, but not only, for a charming fondue evening by the stove. On Wednesday evenings, you can snowshoe to the yurt with a mountain leader, who will offer an aperitif in the heart of the forest. The return to the resort after the evening is by torchlight for a magical atmosphere.

### **Valmo'insolite**

*Everyday*

*30€ fondue evening - 65€ Wednesday snowshoeing and fondue outings.*

*205€ per night, breakfast included.*



## Overnight in guarded refuges: Le Logis des Féés and le Nant du Beurre

**The Lauzière** is a wild massif, classified Natura 2000, where the traces of man are barely visible, and is a delight for ski tourers and snowshoe trekkers.

Hikers experienced in the mountain environment can take refuge at **the Logis des Féés**, nestling at an altitude of 1839m above the village of Celliers, for the night and share a meal with Manu, the manager!

The refuge has dormitory rooms sleeping 28 and a large hall.

### **Refuge du logis des féés**

[www.refuge-logis-des-fees.fr](http://www.refuge-logis-des-fees.fr) - 06 82 17 06 34

*By reservation only.*

*50€ overnight stay with evening meal and breakfast.*

**In Nâves**, hikers will find a different setting. Set against the Beaufortain mountain range and facing the sun, the Nant du beurre refuge welcomes visitors in summer and winter alike. Pascale welcomes them into her cocoon at an altitude of 2080m. 38 people can find refuge for a night or simply a meal, mainly made with local produce.

### **Refuge du Nant du Beurre**

[refugedunantdubeurre.fr](http://refugedunantdubeurre.fr) - 06 82 70 26 99

*25€ the night - 49€ half-board for adults.*



# AS IT IS B(OW)

## "Au cherche midi"

Cats may have 7 lives, but Nicolas Mathieu has just as many, at least in his professional life. A hotel and restaurant owner, woodcarver and first-aid diver, Nicolas is now a picker and maker of old-fashioned pasta and crozets in Nâves! Gong is the brand he launched 7 years ago with his wife Marion. Their organic crozets and pasta are made the old-fashioned way, with a low glycaemic index to provide the right nutrients for sportsmen and women! Both mountain guides, they are keen to satisfy the needs of sports lovers.

Previously based in Valmorel, they moved to the sunny south-facing slopes of **Nâves** to set up their laboratory, but that's not all!

They have also set up a grocery shop and restaurant, '**Au cherche midi**'. Its aim is to be a meeting place for the people of the village, but also for hikers and skiers in winter and summer!

They sell their **crozets and Sarazin pasta**, as well as local products such as cheese, charcuterie and bread. They also bake pies, make snacks as required and offer tartes flambées and home-made pizzas at the weekend!

In short, it's the place to go for a bite to eat after cross-country skiing on the beautiful Nâves cross-country ski area, but also to buy a few local products, including the famous Gong crozets!



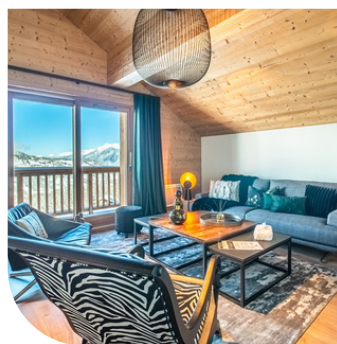
## The cocoon Alpaga of Lumi\*\*\*\*

The Lumi\*\*\*\* residence has been expanded with new flats such as **the Alpaga**. Lumi, a luxury 4\* residence with hotel services, is located in the village of La Charmette, linked to the Grand Domaine by ski lift or free shuttle bus to Valmorel.

L'Alpaga sleeps 8 with 4 bedrooms, 2 bathrooms, 99 m<sup>2</sup> of tastefully decorated space and a lovely west-facing balcony with panoramic mountain views. Services included: bed linen, towels, end-of-stay cleaning (except kitchen area and crockery), one parking space, wifi.

### Apartment Alpaga 306 :

From 247€/night



### 10% discount on LUMI flats:

From 16/12/2023 to 30/12/2023

From 06/01/2024 to 10/02/2024

From 02/03/2024 to 20/04/2024



---

# THE B(OW) VILLAGES

Valmorel is much more than just a resort! It's a destination: Valmorel and the Aigueblanche Valleys. These valleys are home to many villages, inhabited all year round, scattered across the 3 valleys of Morel, Celliers and Nâves.

Among this constellation of towns and villages, here are 5 places not to be missed: Valmorel, Doucy, La Léchère-les-Bains, Celliers and Nâves.

## Valmorel

### Station side

Nestling at the foot of the imposing Cheval Noir mountain, Valmorel has a unique charm, a blend of **authenticity and modernity**.

The whole resort is built around the main pedestrian street, which is constantly covered in snow and where pedestrians are king! With chalets limited to 4 storeys, small squares and covered car parks, Valmorel stands out for its perfect mountain integration. As well as being right at the heart of a linked ski area with more than 165km of pistes, Valmorel is THE ski-in/ski-out resort, with easily accessible, state-of-the-art ski lifts.



## Doucy

### Nature side

In winter, in the heart of the Valmorel ski area, the small resort of Doucy is a haven of **tranquillity and friendliness for families** with young children, far from the hustle and bustle of the big resorts.

The gentle terrain is ideal for learning to ski in complete tranquillity, with a link to the Grand Domaine for the more experienced skiers. As a partner resort of the Gulli TV channel, a varied entertainment programme delights young and old alike every day.



---

# THE B(OW) VILLAGES

## Celliers

### *Côté secret*

Lovers of **wide open spaces and serenity** will be delighted. Celliers, in its snow-covered setting, is the perfect place for a holiday in the heart of unspoilt nature. It's the place to be for lovers of ski touring and snowshoe trekking.

As Celliers is an unspoilt natural area, there are no signposts or markers for these activities.

The village is linked to the Grand Domaine by a cable car, so you can enjoy a day or more on the slopes!



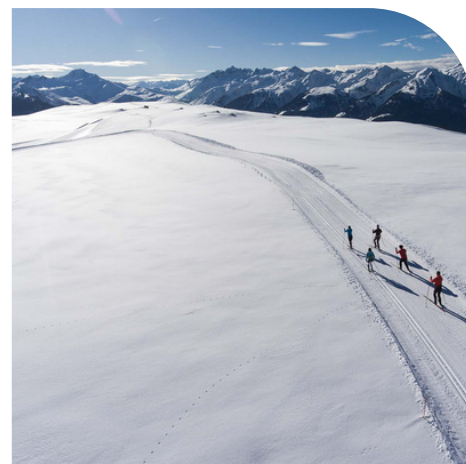
## Nâves

### *Côté nordique*

Nâves is a totally atypical Nordic site. Set against the backdrop of the Beaufortain mountain range, at an altitude of 1300m, the Nordic ski area lies in a wild mountain world, untouched by any facilities. This is where you'll find the highest Nordic ski run in Savoie at 1984m.

With 49km of skating and alternating runs, the Nordic area is popular with lovers of silence and nature, as well as with ski tourers and snowshoers who enjoy the immaculate scenery.

Idea for outing : a new trail leads to the Nant du Beurre refuge at an altitude of 2080m, where you can enjoy a gourmet and contemplative break or spend the night in the refuge!



## La Léchère-les-Bains

### *Côté bien-être*

The La Léchère-les-Bains spa centre in the Aigueblanche valley is renowned for its rheumatology and phlebology cures. From April to October, more than 4,000 people come to enjoy the benefits of the waters in a wooded setting on the banks of the Isère. Contractual 3-week cures and 3- or 6-day mini-cures are available.

At the heart of the establishment is the thermal spa, open all year round. Holidaymakers can enjoy a relaxing break in the thermal waters. The sophisticated facilities include a hammam, indoor and outdoor jacuzzis, a pool, a grotto, and a treatment area for quality massages using Nanska products, a Haute-Savoie brand, and Terraké, a French brand.

Admission to the spa is €25 on weekdays and €30 at weekends.



# THE SHOW

Sport, adrenalin, conviviality, complicity, music, energy... these are the key words that sum up the winter agenda for the whole destination!

Throughout the season, the Tourist Office offers free events for everyone, including human curling, snow football, puppet evenings, quizzes, cosy afternoons and virtual games...



## La Grande Odyssée

*22 january 2024*

It's been four years since the adventure of La Grande Odyssée began in Valmorel! The mushers have developed a taste for this demanding stage, with steep sections in a magnificent setting that they all enjoy.

To enhance this beautiful winter's day, the resort is offering children an introduction to carriage driving in the piou piou snow garden close to the resort centre, mountain film screenings, a presentation and meeting with the Valmorel mushers (Escapades nordiques) as well as the Grand Nord animation.



## La winter Spartan race

*27 & 28 janvier 2024*

Since 2016, Valmorel has hosted the one and only Spartan Race winter event.

Two races punctuate this sporting weekend, which attracts almost 3,000 spectators.

And let's not forget the kids, with **the Kids race** ranging from 1 to 3km with obstacles to help them become future Spartans!

### **The Sprint - 5km and 20 obstacles**

"This is the signature event of the Spartan Race, a fast-paced adventure over rugged terrain designed for Spartan Race novices or first-time Spartans. It's the obligatory step into the Spartan world. The Sprint is a Spartan Trifecta eligible race."

### **The Super - 10km and 25 obstacles**

"This distance combines speed, endurance and technique. The Super format was designed to test runners' athleticism, mental strength and ability to adapt to rough terrain. This race is the bridge between athletes and real Spartans. The Super is an eligible race for the Spartan Trifecta." It's an event that can't be missed, where the atmosphere is at its best all weekend long!



---

# THE SHOW

## An enchanting Christmas 24 december 2023

Christmas in Valmorel is all about enchantment and charity. As well as the traditional arrival of Father Christmas and his elves, and the distribution of Christmas presents and photos, Maryan, the confectioner, is selling a giant buche.

All proceeds will go to the Œuvre des Pupilles pour les Orphelins des sapeurs-pompiers de France!



## Ski show

### Tuesdays during school holidays

The must for any ski holiday is the evening ski show! Demonstrations by ESF and ski club instructors, acrobatic paragliding by our ambassador Eliot Nochez, sound and light show. Fireworks, mulled wine and hot chocolate.



## New year

### 31 december 2023

The New Year celebrates in Valmorel and Doucy! Concert, torchlight descent, paragliding demonstration by acrobatic paragliding champion and ambassador for the resort Eliot Nochez, fireworks with countdown and concert all night long!



## Manu dans le 6-10

### From 5 to 9 February 2024

For the last 3 years, Valmorel has welcomed Manu du 6-10 and his team for a week of relocation of the show! Manu takes over the Rencontres et Musique room, where the public can watch the morning show and experience it first-hand, and even take part in it.



## Mercredi c'est Gulli Every Wednesday of the season

Gulli themed days in Doucy with games for children, hot chocolate, a children's show, challenges, Gulli gifts and, during the school holidays, a torchlight descent and fireworks!



---

# THE SHOW

## The Valmo'belle

9 Février & avril 2024

Friendly ski-touring races!

This is the winter event for sports enthusiasts. It's a dry ascent of 535m D+ in 2 legs with a finish either at the altitude restaurant of La Vache orange or at the Voiles du nant restaurant. Refreshments at the finish.



## National Firefighters Challenge

From 20 to 22 March 2024

Every year, firefighters from all over France get together in Valmorel for a skiing and paragliding challenge.

The idea is to follow a course marked out by challenges.

These 3 days are a unifying moment for their teams, essential for good cohesion.

It's also a great show for the holidaymakers.



## Eliot Nochez's flying and skiing competition

16 & 17 Mars 2024

Eliot Nochez, former world acrobatic paragliding champion and ambassador for the resort, has been organising flying and skiing competitions at Valmorel for the last 3 years.

Like the Firefighters' Challenge, participants follow a course on paragliders and skis, and take part in a number of tests, including throwing at a target, passing through a gate and touching a stake. These are highly technical events requiring real piloting precision.



## La Valdingue

16 march 2024

It's the offbeat winter event on the sunny side of Nâves!

Parrot races, cross-country ski races, javelin throwing, fancy dress parades - if there's one day where you can let off steam, it's at La Valdingue!





# PRESS CONTACT



## Manon Tharaud

Press officer for Valmorel

[mtharaudevalmorel.com](mailto:mtharaudevalmorel.com)

Phone : +33 6 76 57 75 09

+33 4 79 22 51 60



## Pauline Scuotto

Links communication Agency

[pauline@linkscom.fr](mailto:pauline@linkscom.fr)

Phone: +33 450 91 41 08

+33 6 65 07 75 98



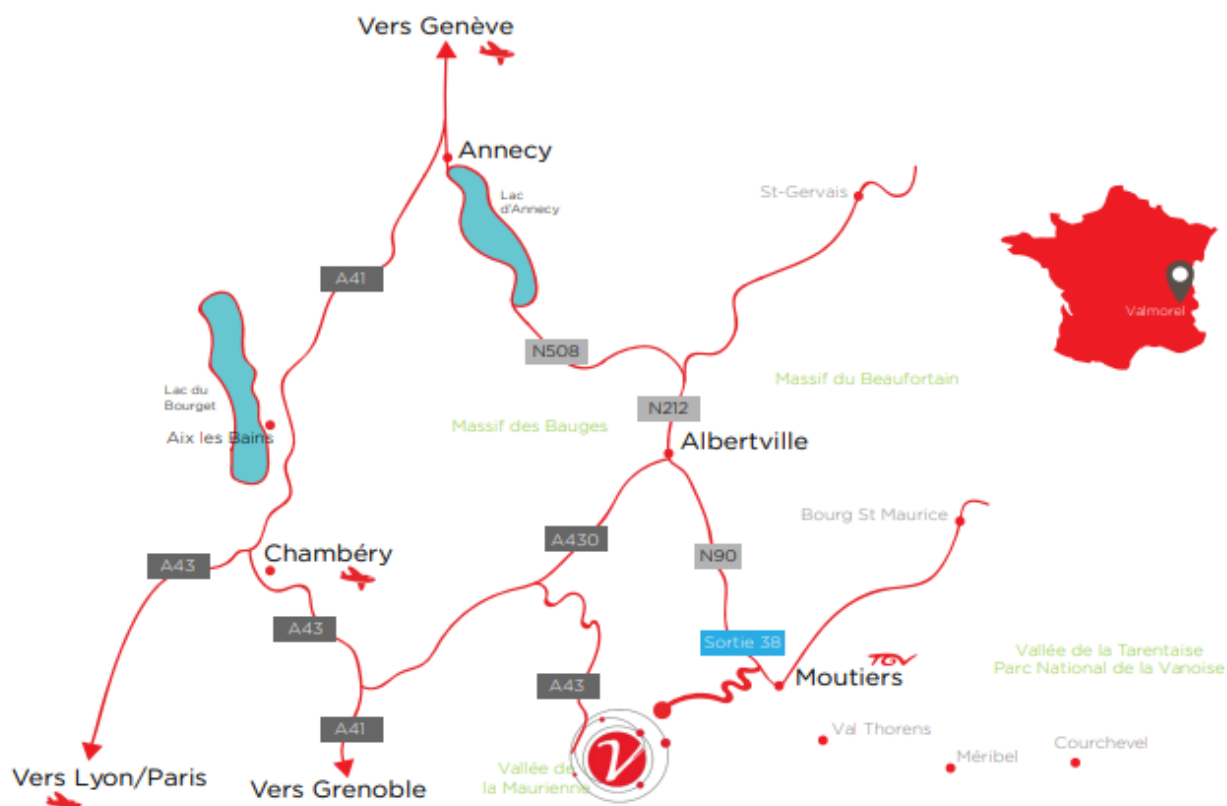
## Stéphanie Lemasson

Links communication Agency

[Stephanie@linkscom.fr](mailto:Stephanie@linkscom.fr)

Phone: +33 450 91 41 08

+33 6 58 17 91 82



Retrouvez [#Valmorel](#) sur les Réseaux Sociaux

