

SUMMER



**VALMOREL**  
Savoie • France

**Welcome !**



[valmorel.com](http://valmorel.com)





# PASS<sup>6</sup> ADVENTURE

Enjoy many activities at great prices !

7 Days of activities



**Save time !**

Scan and buy your  
Pass on line or on  
[valmorel.com](http://valmorel.com)

(Pick up your Pass' at the tourist office)





INSTEAD  
OF

124€



# PASS<sup>6</sup> ADVENTURE



INSTEAD  
OF

143€

## ADULTS

From 13 years old

- Unlimited pedestrian access to the chairlifts & gondolas  
+ 1/2 day mountain bike access
- 2 tickets to the swimming pool of Centre Aquatique du Morel (12km)
- 1 ticket to the swimming pool of Doucy village
- 1 entry to the cinema
- 1 archery session of 1 hour with a qualified instructor
- 1 entry to the Valmo'Bourricot mini-farm
- 1 hour of mountain bike coaching with a qualified Instructor

## CHILDREN

From 5 to 12 years old

- Unlimited pedestrian access to the chairlifts & gondolas  
+ 1/2 day mountain bike access • 2 tickets to the swimming pool of Centre Aquatique du Morel (12km) • 1 ticket to the swimming pool of Doucy village
- 1 entry to the cinema • 1 archery session of 1 hour with a qualified instructor
- 1 entry to the Valmo'Bourricot mini-farm • 1/2 hour access to the inflatable games in the OKAPI park • 1/2 day at the «Kids Club» • 1 hour of mountain bike coaching with a qualified Instructor-Valmo'Bike at Mountain Bike Schools (From 6 years old)
- 30minutes snowtubing activity ( minimum height 1.25m)

ACTIVITIES	ACCESS REQUIREMENTS*	ACCESS CONDITIONS*
SWIMMING POOL CENTRE AQUATIQUE DU MOREL	Bellecombe village 12km. outdoor swimming pool open every day from 10.30am to 7pm. Indoor swimming pool opening in case of bad weather. 2 Vallée'Bus tickets access	Show your adult and child pass to the pool reception desk each time you use the pool. Swimming shorts are not permitted.
SWIMMING POOL OF DOUCY STATION	Open from 10.30am to 6.30pm. On Saturdays from 1.30 to 6.30pm. Entry subject to maximum daily safety availability.	Show your adult and child pass to the pool reception desk each time you use the pool. Swimming shorts are not permitted.
LIFT COMPANY	Open 7 days a week from 9am to 12.45pm & from 1.45 to 5pm. Depending on the opening days of the lifts. Open till August 31st	Show your adult and children's Passes to lift staff each time you use the lift
CINEMA - Le Studio	1 entry to the 4 screenings on offer each day. Additional session at 2.30pm in case of bad weather	Show your adult and child Adventure Pass at the cinema reception desk to validate your screening.
CHILDREN'S CLUB PIOU PIOU	1 x Half-day from 5 to 12 years old Valmorel - Mornings from Monday to Friday Doucey - Afternoons from Monday to Thursday	You must register the day before and show your child Adventure Pass at the Piou Piou children's club reception desk to validate the half-day.
OKAPI GAMES PARK	Open every day from 9.30 to 12 & from 2 to 6.30pm Open till August 29th	Presentation of the Child Adventure Pass at the reception desk of the activity for validation of the entry.
ARCHERY	Access Monday to Friday - From 9.30am to 12 & from 2 to 6.30pm. On Sunday from 2 to 5pm. Without booking. From 6 years old. Open till Wednesday 27/08	Presentation of the Adult/Child Adventure Pass at the reception desk of the activity for validation of the session. <i>The activity can be postponed in case of rain</i>
VALMO' BOURRICOT • MINI-FARM	Open from Sunday to Friday. From 2.30 to 6pm Without booking.	Presentation of the Adult/Child Adventure Pass at the reception desk of the mini-farm to validate the access.
MOUNTAIN BIKE COACHING	Presentation of the mountain bike area, which level for which track, downhill tips... Sunday evening at 6pm: Meeting at the Ski Bike & Co shop - Nicolas (+33 (0)6 50 77 62 09) Monday evening at 6pm : Meeting at the Mountain Bike Schools (Morel Square) -Babar - Valmo'Bike (+33 (0)6 88 68 22 16) & Electric Mountain Bike with Matthieu Mountain bike coaching for children (from 6 years old) : On Monday from 6pm - Valmo'Bike at the Mountain Bike Schools On presentation of the <u>Adventure Pass only</u>	

\*The minimum/maximum ages required, the public opening hours of the service providers, the time slots defined in the PassAdventure



# • SPECIAL RATES WITH THE ADVENTURE PASS •

PARTNERS	DISCOUNT OFFERS <small>Discounts valid only once for the duration of the pass</small>	PASS' RATES	CONDITIONS	PUBLIC RATES
<b>ADULT ADVENTURE PASS</b> <small>(FROM 13 YEARS OLD)</small>				
SKI LIFT COMPANY	Moutain bike access for a week	52€		87€
MOUNTAIN BIKE SCHOOLS : VALMO'BIKE OR SKI BIKE & CO	Discount for 1 moutain bike outing with a MB guide	-5€		
SPA Ô DES LAUZES La Léchère-Les-Bains	1 access of 2 hours to the Spa	-5€	From 16 years old Bathrobe hire extra	30€ or 25€
Restaurant L'Ô à la Bouche La Léchère-Les-Bains	5% discount on the final restaurant bill		Excluding Festival de l'Ô & Ô Délice packages	
MOREL AQUATIC CENTRE Grand Aigueblanche	1 entry to the aquatic centre	4.50€	For everyone	5.50€
THE WALKING ELEPHANT	1 massage of 1 hour	55€	From 8 yrs old	65€
BULLE DE DÉTENTE	1 AMMA massage of 20min	17€	From 8 yrs old	20€
	1 hour YOGAMASS session	27.50€	For children, with parents'agreement	30€
FRANCE RAFT	1 easy rafting descent on the Isère river (gorges course)	54€	Offer of 1 pass for a group or a family	60€
	1 complete rafting trip on the Isère river	69€		75€
	1 descent on canoeraft on the Isère river (gorges course)	69€		75€
	1 descent on hydrospeed on the Isère river (gorges course)	69€		75€
TOURIST OFFICE	Official Valmorel shop	-10%	Excluding «édition» leaflets	From 2€
VALLEY'BUS	1 day pass	Free	Upon presentation of the Pass Aventure	2€
AN RAFTING	10% discount on the wild waters'activities	-10%		
VALMO'BRANCH	1 access to the tree top adventure park	22€	Over 11 years old	25€
ZIP LINE - LA TYROLIENNE	1 access to the zip line	30€	Just turn up Subject to availability	35€
ESCAPADES NORDIQUES	1 sled dog trekking	35€	From 12 years old	38€
<b>CHILDREN'S ADVENTURE PASS</b> <small>(FROM 5 TO 12 YEARS OLD INCLUDED)</small>				
SKI LIFT COMPANY	Moutain bike access for a week	40.50€		65€
AN RAFTING	10% discount on the wild waters'activities	-10%		
FRANCE RAFT	1 «easy rafting» descent on the Isère river(gorges course)	54€	From 9 years old	60€
VALMO'BRANCH	1 access to the tree top adventure park	16€	Over 5 years old	18€
ZIP LINE - LA TYROLIENNE	1 access to the zip line	30€	Just turn up Subject to availability	35€
TOURSIM OFFICE	1 entry to the Valmorel treasure hunt	Free	4-6 & 7-10 years old	2€
ESCAPADES NORDIQUES	1 walk with a sled dog	25€	7-12 years old	27€
VALLEY'BUS	1 day pass	Free	Upon presentation of the Pass Aventure	2€

Nominative pass valid for 7 consecutive days from 6th of July to 1st of September 2024 • GCS on valmorel.com and at the Tourist Offices of Valmorel and Doucy



# PARTNERS' CONTACTS



- 00 33 4 79 09 80 26 : LIFTS OFFICE & SNOWTUBING • • Spa Ô des Lauzes : 00 33 4 79 22 44 16
- 00 33 4 79 09 81 86 : Children's club • • Bulle de détente : 00 33 6 18 40 68 63
- Swimming pool Centre Aquatique du Morel • • Éphelides Massages : 00 33 6 31 84 02 44
- 00 33 4 79 24 05 25 • Traditional Chinese Med : 00 33 6 70 46 54 37
- 00 33 4 79 09 98 50 : DOUCY Swimming pool • • AN Rafting : 00 33 4 79 09 72 79
- 00 33 4 79 09 81 20 : Cinema - Le Studio • • Evolution 2 : 00 33 4 79 07 97 21
- 00 33 6 10 74 12 26 : Parc OKAPI • • France Raft : 04 79 55 63 55
- 00 33 6 81 17 11 51 : Vamo'Bourricot & Valmo'Trott • • Vallée'Bus : 00 33 4 79 09 99 91
- on the spot : Archery • • Zip line : on line or on the spot
- Mountain Bike schools** • • Valmo'Branch' : on the spot
- 00 33 6 50 77 62 09 : Ski Bike & Co • • Sled dogs - canicross : 00 33 7 85 99 61 90
- 00 33 6 88 68 22 16 : Valmo'Bike • • Office de tourisme : 00 33 4 79 09 85 55
- Spyder Mountain : 00 33 6 12 45 43 77
- Horse Riding Centre Ecuries de Grand-Coeur  
00 33 6 80 37 20 07
- Canyoning school : 00 33 6 12 29 75 10

## FREE MOUNTAIN BIKE SHUTTLES

On **Tuesdays, Thursdays and Saturdays** - June 28 to August 31st  
Enjoy a free shuttle service to get back from your mountain bike downhill ride!

- Ask for the timetable at the Tourist Office •



### VALIDITY OF THE CARDS

Nominative card valid from July 5th to August 31st-2025. Valid for 7 consecutive days from the date of purchase or the day defined).

### CANCELLATION / MODIFICATION

For all types of Adventure Pass purchases and in the event of cancellation by the client, the Valmorel and Vallées d'Aigueblanche Tourist Office will automatically apply penalties to the client, under the conditions set out below: Adventure Passes are non-cancellable, non-refundable and non-exchangeable. Some activities may have a different minimum or maximum age limit from that set by the Children's Pass'Adventure for insurance reasons. This is the case for the archery activity & Mountain bike coaching which are accessible from the age of 6. Snowtubing activity 1.25meter minimum. Depending on the conditions of access to the activities, the service provider is entitled to cancel an activity provided that the minimum conditions of filling are not met. In the event that the service provider is obliged to cancel the activity before the client has been able to start the activity, a postponement of the activity may be offered to the client.

Full terms and conditions at the Valmorel and Doucy Tourist Office and on [valmorel.com](http://valmorel.com)



| **SUMMER 2025** |

# CHAIRLIFTS & GONDOLAS



## OPENING OF THE LIFTS IN SUMMER TIME

June 28th to August 31st

Tél : 00 33 4 79 09 80 26

Mél : [dsv@dsv-valmorel.com](mailto:dsv@dsv-valmorel.com)

Website : [skipass.valmorel.com](http://skipass.valmorel.com)

## Opening & time tables

Every day, a lift takes you up to the top of the mountain so you can enjoy the wide open spaces, admire the panorama with the kids without getting tired, or simply enjoy a picnic

## All information

Tourist office desk

■ On [valmorel.com](http://valmorel.com)

■ On [skipass.valmorel.com](http://skipass.valmorel.com)

■ At the cash desk - main street

■

## TICKETS PRICES

1 way ticket - 1 day ticket - 7 day pass - 7 day family pass - season pass

**Bike park** : special weekend prices to access the Mountain bike park !

Opening from 9 to 12h45

& from 1.45 to 5pm

From June 28th to August 31st

## WHICH LIFT IN SUMMER TIME ?

### • VALMOREL

Planchamp gondola

Pierrafort gondola

Lanchettes chairlift

### • DOUCY VILLAGE

Combelouvière chairlift

### • CELLIERS VILLAGE

Celliers gondola



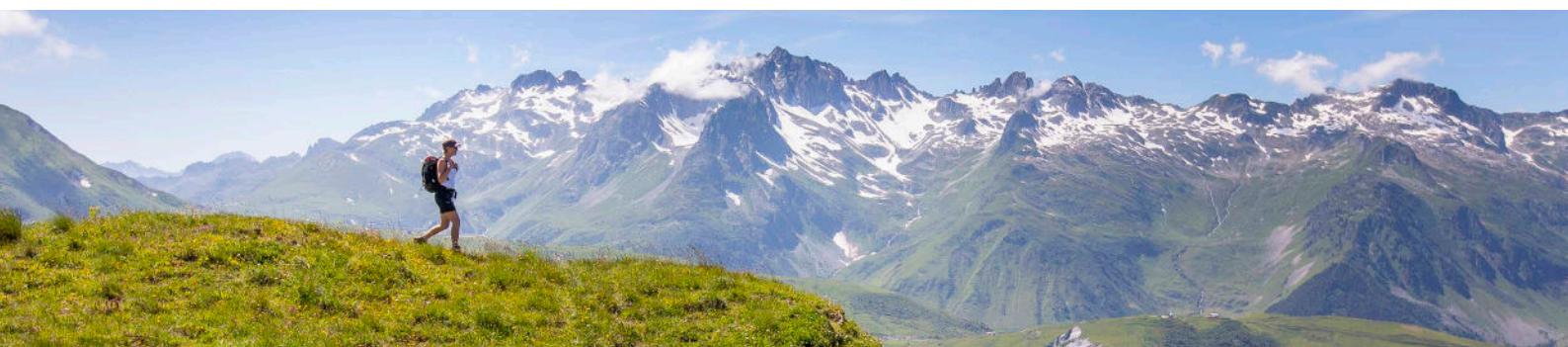
## PIC NIC & CHILLING OUT AREA

**Planchamp gondola** : terrace with deckchairs - chilling area

**Pierrafort gondola** : pic nic area by the pond

	MONDAY	TUES.	WED.	THUR.	FRIDAY	SAT.	SUNDAY
PIERRAFORT-gondola	X		X		X	X	X
PLANCHAMP-gondola	X	X	X	X	X	X	X
LANCHETTES-chairlift		X					
COMBELOUVIERE- chairlift		X		X			
CELLIERS - gondola				X			

## ▶ ADVENTURE PASS PARTNER





# WALKS & HIKES

## WITH OR WITHOUT LIFT ASSISTANCE

Discover over 300km of hiking trails

26 safe, signposted loops in 4 sectors

**Exhilarate yourself** by wandering through the alpine meadows and pastures of the Morel valley

Marvel at the heart of **the Massif de la Lauzière and the Vallée de l'Eau Rousse**



### COL DE LA MADELEINE - B25

(on the map sold at the tourist office)

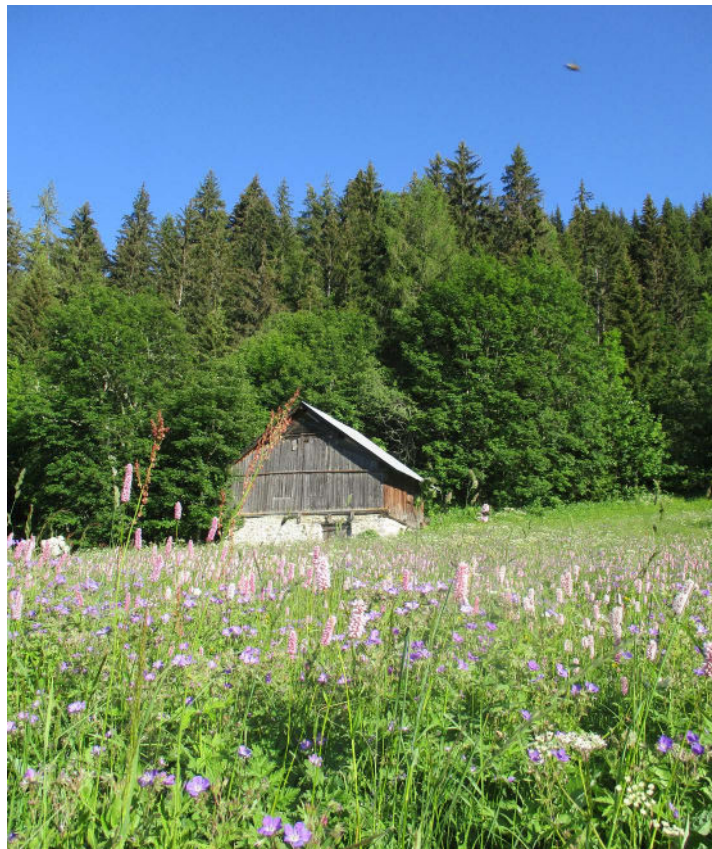
**Ride length** : 16km

**Altitude difference** : + 700m

**Top** : 2 185m

**Duration** : 7 à 8h sans télésiège

**Point of interest** : panorama over the summits of La Lauzière mountain range



### HIKE TO CHALET DES BACHALS VIA PLAN PARC

(on the map sold at the tourist office)

**Altitude difference** : + 270m

**Top** : 1620

**Duration** : 2h the round trip

**Point of interest** : Panorama over La Lauzière mountain range, Le Cheval Noir & Valmorel



### THE HIKING MAP

**A map** lists all the hiking trails in Valmorel, Doucy, Celliers and Nâves.

On sale from the tourist office

Downloadable from **valmorel.com**





| **SUMMER 2025** |

# WALKS & HIKES

## WITH OR WITHOUT LIFT ASSISTANCE

Discover over 300km of hiking trails

26 safe, signposted loops in 4 sectors

**Exhilarate yourself** by wandering through the alpine meadows and pastures of the Morel valley

Marvel at the heart of **the Massif de la Lauzière and the Vallée de l'Eau Rousse**



### THE 57 WATERFALLS B14

(on the map sold at the tourist office)

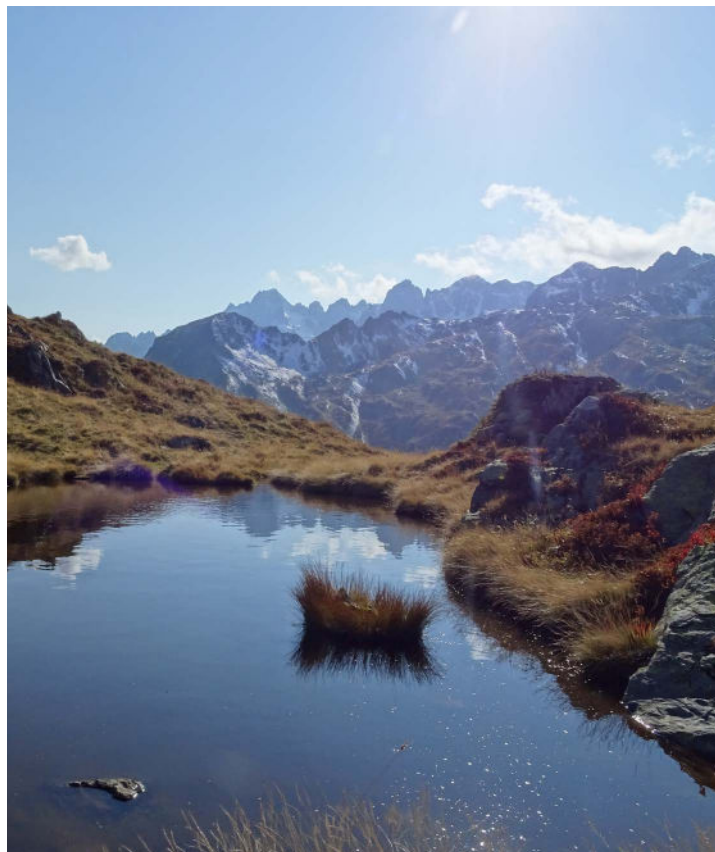
**Ride length** : 12km

**Altitude difference** : + 250m

**Top** : 625m

**Duration** : 3h30 à 4h

**Points of interest** : fauna & flowers.  
picnic areas. Easy access with a pram



### L'ARPETTAZ MOUNTAIN LAKE B18

(on the map sold at the tourist office)

**Ride length** : 5,5km

**Altitude difference** : + 360m

**Top** : 2115m

**Duration** : 2h00

**Starting from** : logis des fées  
-mountain hut (Celliers).

**Points of interest**: mountain lakes,  
fauna, view over Valmorel & Vanoise  
glaciers

## VIEWS OVER

**LE MONT-BLANC - LA LAUZIÈRE MOUNTAIN RANGE -LA VANOISE GLACIERS**

## FANCY A BREAK

PICNIC AREAS

CLOSE TO THE LIFTS



valmorel.com



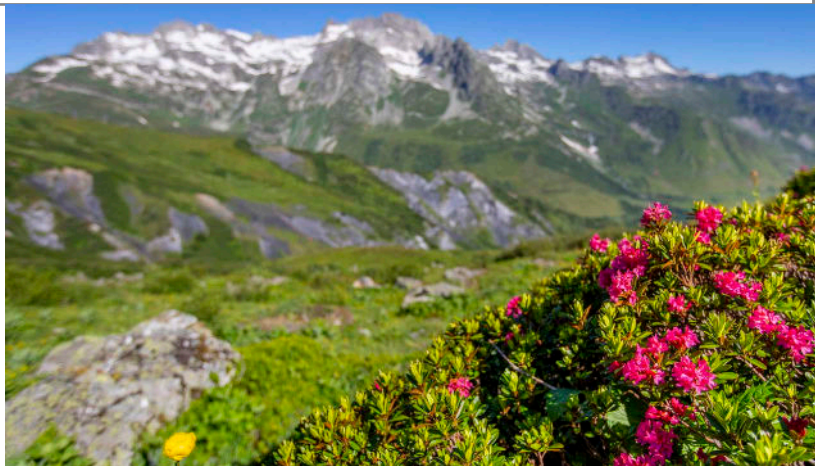
# HIKES WITH A MOUNTAIN GUIDE

## ■ DISCOVER THE MOUNTAINS WITH A GUIDE

Explore the trails of Valmorel and the Aigueblanche Valleys to your heart's content.

**There's something for every taste** and level: family walks, nature and theme hikes accompanied by mountain specialists, short walks or long excursions...

**The aim remains the same:** to admire the Alps from above, and to enjoy nature at close quarters with its flora and fauna.



### • ACROFOBY JEAN-PASCAL SIMOND

- > Tél : 00 33 6 11 07 50 66
- > Web : valmorel-montagne.com
- > FBook : valmoraquettes
- > valmorelrandonneesmontagne

#### **Geology outing in the Morel and Lauzière valleys**

- In search of rock crystal points. Midday. Departure from Valmorel. Carpooling 20 mins.

From 8 years old

#### **Flora outing**

- Discovering the flora. Easy hike. Half-day. Approach in 4x4 vehicle. Elevation 100m

From 6 years old

#### **Hikes in the surrounding peaks**

- The Vanoise park & glaciers, the Beaufortain or the Lauzière mountain range. Day outing. For average walkers.

#### **Bivouac**

- Ascent of Crève-Tête peak. From 6pm to 11am the next day. Access by 4x4 then hike before the bivouac. Grilled meats on a wood fire. From 6 years old

#### **Safari 4x4 vehicle**

- Discovery of the fauna and flora in 4x4 vehicle. Passage of the Gollet and Mottet passes at an altitude of 2400m. Observation of marmots, chamois and ibexes if you are lucky. Superb view over the Mont-Blanc and the Vanoise glaciers. From 6 years old.

#### **Legendary peaks of Valmorel**

- Come and admire Valmorel from the top of its legendary peaks, the Cheval Noir and the Niélard. From 12 years old

#### **Cheval Noir tour with overnight stay in a refuge**

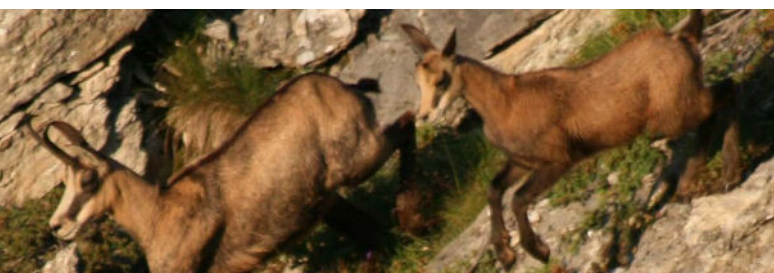
- Tour of Nielard and Cheval Noir peaks starting from Valmorel, with a night at the Plan Lombardie mountain refuge. Departure from the Pierrafort gondola. From 12 years old.

#### **Discovery & approach of chamois et marmots at Gollet Pass or La Lauzière**

- Discovery of the Lauzière mountain range, Natura 2000 classified site. From 5am. to 11.30 am. Duration 6 hours. From 8 years old

#### **Sun rise at 2342m**

- Climb to 2342m to see the sunrise at the top of Crève-Tête. 4 persons max. Duration 7h. From 12 years old



# HIKES WITH A MOUNTAIN GUIDE

## •TARENTEISE ALTITUDE SAUVAGE

- > Tél : 00 33 6 81 72 03 83
- > Mail: tarentaisealtitudesauvage@gmail.com
- > Web site : Tarentaise Altitude Sauvage
- > Insta : tarentaise\_altitude\_sauvage
- > FBook : Randopêchenature

### **An adventure out of time.**

#### **Bivouac close to the chamois**

•Join us for a getaway in the magnificent Lauzière massif, starting from the Logis des fées mountain refuge in the village of Celliers.

Magical night under the stars in the heart of our improvised camp.

From 7 years old. Hike of about 1h30 with D+ of 300m. Meals not provided.

#### **Animal watching in Lauzière**

•Experience an unforgettable evening of wildlife observation accompanied by an experienced guide. Chamois, black grouse, wolves. Binoculars and telescopes available, you can admire these animals in their natural surrounding without disturbing them.

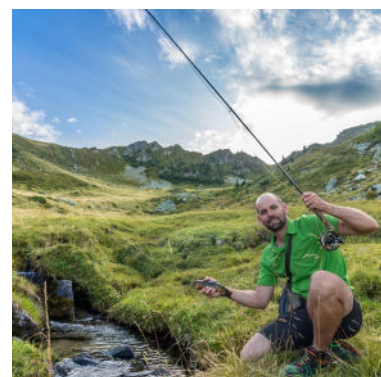
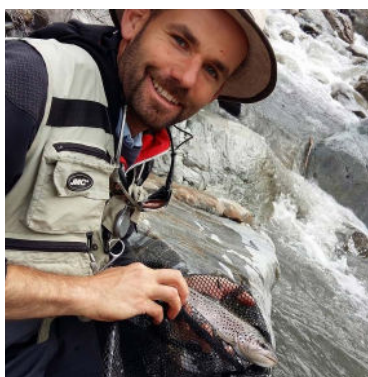
From 7 years old. Evening meal in the mountains with tasting of local products. Departure 5.30 pm. from the mountain refuge le logis des fées, return at 9.45 pm. Transport and meals not included.

## **Night hike**

- Discover the enchanting world of the Alpine night!

Departure from Doucy Combelouvière and immerse yourself in the nocturnal world of the Alpine forests. Guided by enthusiasts, you will meet the inhabitants of the night such as owls and deers and learn to appreciate these mysterious atmospheres. Thanks to a BatBox, you will be able to listen to the bats!

Departure at 9 pm. and return at 10.30 pm. From 7 years old.



## **Hiking & Fishing**

- Explore the wild torrents and majestic lakes of the Vanoise mountain range and learn fly fishing or toc fishing.

Guillaume, passionate and expert, will guide you for an authentic and enriching experience.

From 8 years old. Day or half-day or evening.



## **FLORENT ESPAGNAC**

- > Tél : 00 33 6 20 00 88 29
- > Mail: florent\_espagnac@yahoo.fr
- > Web site : www.florentespagnac.fr
- > FBook : Randoespagnac

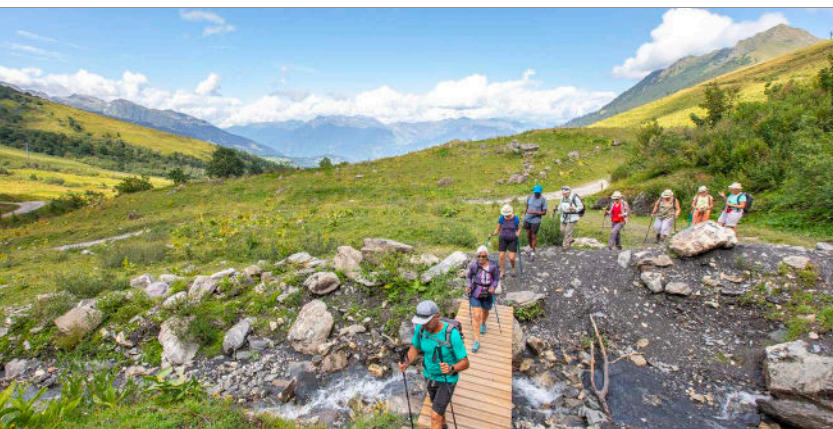
### **At the heart of forests & mountains**

- Family outings. Half-day or full day. Available the week of 19 August





# HIKES WITH A MOUNTAIN GUIDE



## EVENING OUTING EXCLUSIVELY FOR CHILDREN

### • VALMOREL ACTIVITÉS OUTDOOR

- > Tel : 00 33 6 33 56 95 00
- > Mail : [contact.vao73@gmail.com](mailto:contact.vao73@gmail.com)
- > Web site : [valmorelactivitesoutdoor.com](http://valmorelactivitesoutdoor.com)
- > Insta : [valmorel.activites.outdoor](https://www.instagram.com/valmorel.activites.outdoor)

### Hiking in the Vanoise National Park

- Enjoy a day hike to discover the Vanoise National Park. A wild and preserved place since 1963.

Wednesdays from 8.45 am. to 5 pm.  
From 8 years old

### Chamois observation & meal at the mountain refuge

- The observation takes place in the Lauzière mountain range reserve. The observation area is located about an hour's walk away on a mountain trail. Carpooling to get there. Tuesdays and Thursdays from Doucy. From 8 years old. Meals not included - Duration 6 hours

### Family-friendly marmot outing

- Come and meet the marmots of Valmorel. A walk that will delight young and old alike. You will learn everything about marmots and their very special way of life. Mondays from 9am to 12pm. From 6 years old

### Hike to the «blue mountain lake»

- We will take the Planchamp gondola to climb to the top of the Col de la Madeleine and emerge in the Maurienne Valley. We will go off-trail to reach the Lac Bleu and have a picnic there at noon. Fridays from 8.45 am. to 5 pm. Duration 8 hours - From 8 years old.

### Thematic hikes : mountain herbal tea & mountain elixirs

- Discover mountain plants and their uses. In 2 hours you will know the main mountain plants that have served and are used by the pharmaceutical industries or that have been used for decades as grandmother's remedies. From 8 years old.



### Trappers'camp in Valmorel \*

- Learn how to build the most beautiful forest cabins during an outing. From 6 to 12 years old. Mondays from 5 pm. to 7 pm.

### Adventure hike \*

- Learn to become real adventurers during this outing. Make fire with a fire stone... and grill their marshmallows. From 6 to 12 years old. Wednesdays from 50 p.m. to 7 pm. Duration 1h30





| **SUMMER 2025** |

# A TRAIL TERRITORY

## ■ FOR TRAIL ENTHUSIASTS

The Morel, Eau Rousse, Isère and Nâves valleys offer an exceptional playground for trail enthusiasts!

The time of a trail in Valmorel with impressive courses, from the balconies of La Lauzière mountain range to the mythical Cheval Noir, to the ridges of Crève-Tête.

Trail races in a grandiose setting to attack the giants of Savoie



**An offer of 20 numbered courses of 4 levels of difficulty spread over 4 valleys divided into 7 sectors**

- Valley of Nâves (6 trail courses)
- Valmorel (5 trail courses)
- Doucy village (3 trail courses)
- La Lauzière mountain range / Bonneval (3 trail courses)
- La Lauzière mountain range / Celliers (1 trail courses)
- Isère river valley / Grand-Aigueblanche (1 trail courses)
- Isère river valley / Feissons Sur Isère (1 trail courses)

- A territory with an area of 183.8 km
- 4 Valleys: Morel Valley, Eau Rousse Valley, Nâves Valley, Isère Valley
- 1 vertical kilometre course (KMV)
- Highest peak Le Cheval Noir 2829 m
- The lowest point 394 m

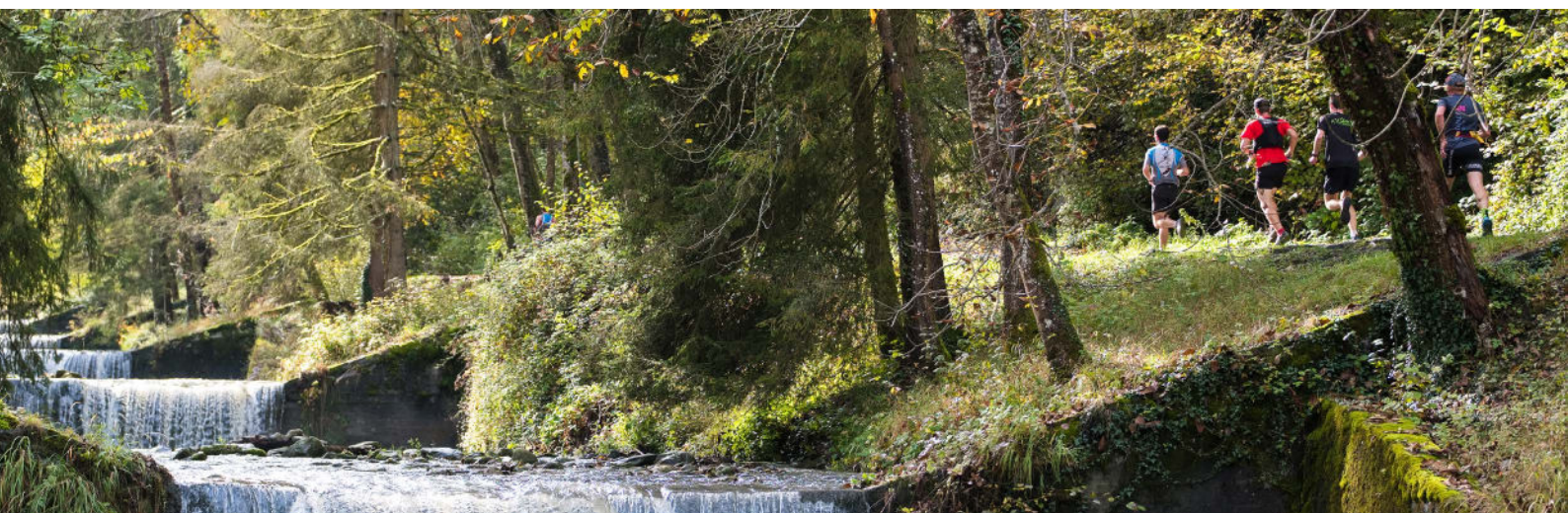
Specific signs for trails :

- Green signposting = very easy
- Blue signposting = middle
- Red signposting = difficult
- Black signposting = expert



The Suricate app allows you to report problems you encounter when you go on the trails.

A marking error, a defective sign, a pollution problem, a need for security, a conflict with an owner or other users... Fill out the form, locate the problem and send





# THE TERRITORY OF ALL TYPES OF BICYCLES

## ■ DISCOVER THE MOUNTAIN BIKE AREA !

**Over 365 km** of marked trails through the Aigueblanche Valleys, **27 trails** allow you to discover this fabulous, multifaceted area. Forests, mountain pastures, mineral peaks, torrents, and magnificent landscapes await you. **Downhill mountain biking (DH), Enduro or Cross-country?** Whether you are an amateur or a beginner, the various trails will allow you to progress on the area according to your level.



## MOUNTAIN BIKING

A range of **27 marked** and colored trails spread over **3 valleys**

■ The mountain biking area in Valmorel is:

### ■ 3 MOUNTAIN BIKE DISCIPLINES

- 6 **DH** tracks  
2 very easy level-green color, 2 medium level-blue color, 2 expert level-red color
- 9 **Enduro MBT Routes**  
2 very easy level-green color, 2 medium level-bleu color, 5 difficult level-red color
- 18 **Cross-country** routes  
3 very easy level, 7 medium level, 5 difficult level, 3 expert level

### ■ LIFTS OFFERS

- Half-day
- 1 day
- 7 days
- 7 day Family pass (from 3 days)
- **Special weekend rates**
- Adults from 13 to 75 years old
- Children from 5 to 12 years old
- Tickets on sale at the lift

### ■ LIFT OPENINGS IN SUMMER

Opening from 9am to 12.45pm  
& from 1h45 to 5pm  
From June 28th to August 31st

- 5 Lifts & gondolas
- 1 **Pumptrack** area in Bellecombe - free access
- 1 **Beginners' area** in Valmorel
- 2 **MBT wash station** : Valmorel & Doucy
- 2 **Mountain bike schools** in Valmorel
- Guided mountain bike outings throughout the 4 valleys
- Mountain bike rental in Valmorel-Doucy-Nâves
- Free mountain bike shuttles from the valley to Valmorel & to Nâves village

### ■ MOUNTAIN BIKE FREE SHUTTLES BELLECOMBE > VALMOREL

FROM JUNE 28th to AUGUST 31st

	School of Bellecombe
TUESDAY	8.45 am
THURSDAY	11.30 am
SATURDAY	13.15 pm
	5.15 pm

### ■ MOUNTAIN BIKING SPECIFIC SIGNS



	MONDAY	TUESDAY	WEDNESDAY	THURSDAY	FRIDAY	SATURDAY	SUNDAY
PIERRAFORT-gondola	x		x		x	x	x
PLANCHAMP-gondola	x	x	x	x	x	x	x
LANCHETTES		x					
COMBELOUVIERE		x		x			
CELLIERS - gondola				x			



| **SUMMER 2025** |

# THE TERRITORY OF ALL TYPES OF BICYCLES

## THE ELECTRIC MOUNTAIN BIKE -VTTAE

### ■ DISCOVER THE EQUIPMENT FOR EAB!

Want to practice Electrically Assisted Bicycles (EAB) in an exceptional setting? With friends or family, come and discover the **EAB** trails!

■ **6 EAB** trails have been marked out in Valmorel and the Aigueblanche valleys. Accessible and varied trails that will help you discover the richness of our region.

■ From the Morel waterfalls to La Coche dam, from Nâves to Valmorel, with family or friends, there are **no less than 100km** of marked routes available to you!



Each route is detailed in a **topoguide sheet** containing the major points of interest in order to guide you throughout your rides

There are **no less than 100km** of marked routes available to you!

### ■ The Electrically Assisted Bicycles area is

#### ■ 6 ROUTES

- LA COCHE
- LES VIGNES
- LES CASCADES
- LES FÉES
- VALLÉE DU MOREL
- VALLÉE DE NÂVES

#### ■ LIFTS PASSES

- 1 half-day
- 1 day
- 7 jours
- Pass Tribu 7 jours (à partir de 3 forfaits)
- Pass saison
- Adultes de 13 à 74 ans
- Enfants de 5 à 12 ans
- Tickets en vente à la remontée mécanique

- 5 Lifts & gondolas
- 1 **Pumptrack** area in Bellecombe - free access
- 1 **Beginners' area** in Valmorel
- 2 **MBT wash station** : Valmorel & Doucy
- 2 **Mountain bike schools** in Valmorel
- Guided mountain bike outings throughout the 4 valleys
- Mountain bike rental in Valmorel-Doucy-Nâves
- Free mountain bike shuttles from the valley to Valmorel & to Nâves village

### ■ MOUNTAIN BIKE & EAB FREE SHUTTLES BELLECOMBE > VALMOREL

FROM JUNE 29th TO AUGUST 31st

	School of Bellecombe
TUESDAY	8.45 am
THURSDAY	11.30 am
SATURDAY	13.15 pm
	5.15 pm

### ■ LIFT OPENINGS IN SUMMER

Opening from 9am to 12.45pm  
& from 1h45 to 5pm

From June 28th to August 31st

### ELECTRIK MOUNTAIN BIKE SPECIFIC SIGNS



	MONDAY	TUESDAY	WEDNESDAY	THURSDAY	FRIDAY	SATURDAY	SUNDAY
PIERRAFORT-gondola	x		x		x	x	x
PLANCHAMP-gondola	x	x	x	x	x	x	x
LANCHETTES		x					
COMBELOUVIERE		x		x			
CELLIERS - gondola				x			

### ■ ADVENTURE PASS' PARTNER



valmorel.com



# MOUNTAIN BIKE SCHOOLS & BIKE SERVICES

## • **ELECTRIK MOUNTAIN BIKES**

- > Tel : 00 33 6 37 88 08 20
- > Mail : [electrikmountainbikes@outlook.fr](mailto:electrikmountainbikes@outlook.fr)
- > [electrikmountainbikes-valmorel.fr](http://electrikmountainbikes-valmorel.fr)
- > FB : Electrik mountainbikes Valmorel

### **Guided outings**

- Discovery outings to expert outings. Half-day. From Valmorel. Max 6 people. From 12 years old or 1.55m

### **E-bike rental possible**

Meeting point: fountain-Morel square

### ► **PASS ADVENTURE PARTNER**

## • **SKI BIKE & CO**

- > Tel : 00 33 4 79 07 14 56  
00 33 6 50 77 62 09
- > Mail : [info@sbcompany.fr](mailto:info@sbcompany.fr)
- > [sbcompany.fr](http://sbcompany.fr)
- > FB : Ski Republic, Ski Bike & Co

### **Discovery and Expert outings**

- Week long courses or half day supervised outings
- Bike rental: DH, Enduro, juniors, electric mountain bikes
- Sales and repairs. Open 7/7
- Meeting: at the store - bourg morel street

### ► **PASS ADVENTURE PARTNER**

## • **VALMO'BIKE**

- > Mail : [valmobike73@gmail.com](mailto:valmobike73@gmail.com)
- > [valmobike.fr](http://valmobike.fr)

### **Guided outings**

- From beginner to expert, our instructors will guide you straight on the most beautiful single tracks in the valley. Courses and half-day supervised outings From 8 years old

### **Mountain bike rental**

Meeting point: Valmobike, Place du Morel

### ► **PASS ADVENTURE PARTNER**

## **SHOP RENTAL**

### **Ski Bike & Co**

Bourg Morel street  
Mountain bike & Electric Assisted Bike rental

- > Tel : 00 33 4 79 07 14 56
- > [www.sbcompany.fr](http://www.sbcompany.fr)

### **Ski Xperience**

Bourg Morel street  
Electric Assisted Bike rental

- > Tel : 00 33 4 79 01 14 05  
00 33 7 66 85 95 45
- > [valmorel-ski-xperience.com](http://valmorel-ski-xperience.com)

## **SERVICES**

### **Bike wash stations**

- Valmorel  
Top of Archery shooting field
- Doucy  
Close to the chairlift

### **Professional advice**

With a **Pass'Aventure card**, the bike instructors can advise you on the courses and equipment.

Sundays and Mondays at 6pm

### **Test ride your mountain bike**

Valmorel  
Top of the Archery shooting field  
Mountain bike trails to learn how to handle your mountain bike.

Free access

## **WELCOME CYCLISTS LABEL**

### **TOURIST OFFICE OF**

VALMOREL

DOUCY STATION

LA LECHERE LES BAINS

**Repair kits** at your disposal

## **LET'S TEST THE PUMP TRACK &**

### **THE BEGINNERS' AREA**

### **PIOU PIOU AREA**

A fun beginners' area with modules for learning how to handle a mountain bike in complete safety. Free

## **TOP OF THE PIERRAFORT GONDOLA**

Valmorel is expanding its mountain biking offering with a new beginners' zone at the top of the Pierrafort gondola. Fun, progressive courses to help you learn the basics of riding gently. A ticket for mountain bike access to the gondola is required.





| **SUMMER 2025** |

# THE TERRITORY OF ALL TYPES OF BICYCLES

## ■ **DISCOVER THE LEGENDARY PASSES!**

Alone or in a group, road cycling is a popular sport. To discover new landscapes or in search of performance, road cycling will bring you feelings of freedom and surpassing yourself! The ascent of the Col de la Madeleine is certainly the most legendary in the area !



**The Col de la Madeleine has been climbed no less than 26 times  
in the history of the Tour de France  
Its ascent is often decisive for the future of the future winner...**

## ■ **THE PUMP TRACK !**

- The pumptrack is defined as a closed off-road circuit, characterized by bumps and turns on a ground often made of dirt and sometimes concrete, wood or tarmac. It is used for mountain biking (Downhill or Cross-country) but also for BMX, skateboarding, rollerblading or scootering.
  - This discipline does not require pedaling but rather bending your arms and legs on bumps and turns to gain speed.
- The Morel pumptrack offers 3 tracks of different levels (green, blue and red). It is located in Bellecombe, next to the swimming pool. Access is free, wearing a helmet is mandatory.

## ■ **MOUNTAIN BIKE SHUTTLES !**

Shuttles are available from Valmorel to reach the pumptrack.  
All information on [www.valmorel.com](http://www.valmorel.com) and in the tourist offices.





| **SUMMER 2025** |

# CHILDREN'S CLUB PIOUS



## CLUB PIOUS PIOUS

Tel : 00 33 4 79 09 81 86

Mail : [contact@esf-valmorel.com](mailto:contact@esf-valmorel.com)

Web site : [www.esf-valmorel.com](http://www.esf-valmorel.com)

Facebook : ESF valmorel

### ■ Club Pious Pious in Valmorel

**From 5 to 8 and from 9 to 12 years old**

A great place for children in the heart of the resort.

Dynamic outdoor activities: discovering nature, sports and creative games...

**Children from 5 to 8 years old**

On Monday & Wednesday

**Children from 9 to 12 years old**

On Tuesday, Thursday & Friday

#### **Activities**

### ■ From 7/07 to 29/08/2025

- From Monday to Friday
- From 9am to 12.

► **PASS ADVENTURE PARTNER**

### ■ Club Pious Pious in Doucy

**De 5 à 8 ans et de 9 à 12 ans**

A great place for children in the heart of the resort.

Activities with trained supervisors to spend a day in a good mood!

**Children from 5 to 12 years old**

From Monday to Thursday

#### ■ **Activities**

- **From 7/07 to 29/08/2025**
- From 1.45pm to 5pm





# ACTIVITIES

## ■ SHARE SPECIAL MOMENTS WITH ANIMALS !

Another fun way to hike, discovering nature **in complete complicity with the animals.**

The little ones will be delighted to discover the farm animals and small dedicated educational workshops!



### • VALMO'BOURRICOT

- > Tel : 00 33 6 81 17 11 51
- > Mail : valmoubourricot@outlook.com
- > Web site : valmo-insolite.fr
- > FBook : valmoubourricot

#### The little farmers

- Discovery and participation in milking the donkey, feeding all the animals on the farm, putting the donkeys out to pasture and daily work of the farmer!
- From 5 to 12 years old. Without parents!  
Wednesdays from 6 p.m. to 7:30 p.m.  
From July 6 to August 30

#### The mini farm

- Discover the mini-farm with the chickens, geese, pigs, rabbits, goats, sheep, ... and the explanations on their way of life in the mountain environment.
- From Sunday to Friday  
From 2:30 p.m. to 6 p.m.  
From July 6 to August 30

#### The mini farm

### ► ADVENTURE PASS PARTNER

#### Hike with a donkey

- What a wonderful idea to hike with a donkey to introduce children to the pleasure of walking. From 1h30 to 6 hours
- Discovery hikes for children under 4. Half-day & full-day options available. From 6 July to 27 August. Closed on Saturday.

### HEAD IN THE STARS

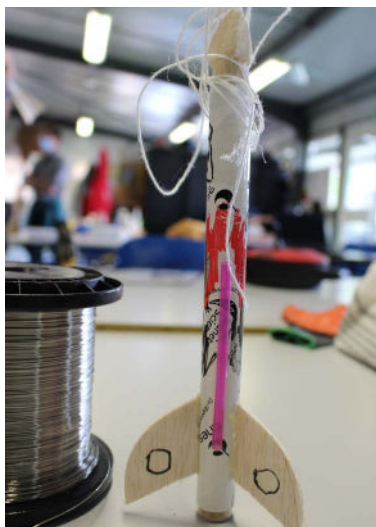
#### • L'ÉCHO DES ÉTOILES

#### L'écho des étoiles

- > Tel : 00 33 7 66 68 79 30
- > Mail : contact@echodesetoiles.fr
- > Web site : observatoire.echodesetoiles.fr

#### Open all year round / Every day

- **L'écho des étoiles** offers sessions for observing the sun and night sky with astronomical telescopes. Everyone can discover the constellations, observe the moon, galaxies and planets. Franck, a physicist and astronomy instructor for many years, is offering half-day workshops for children (aged 4-12 and teenagers). Handle instruments (sextant, telescope, mirror, etc.), make maps of the sky, study and create craters.
- discovery or scientific workshops  
Duration : 1h30  
Village : Le Villaret de Doucy

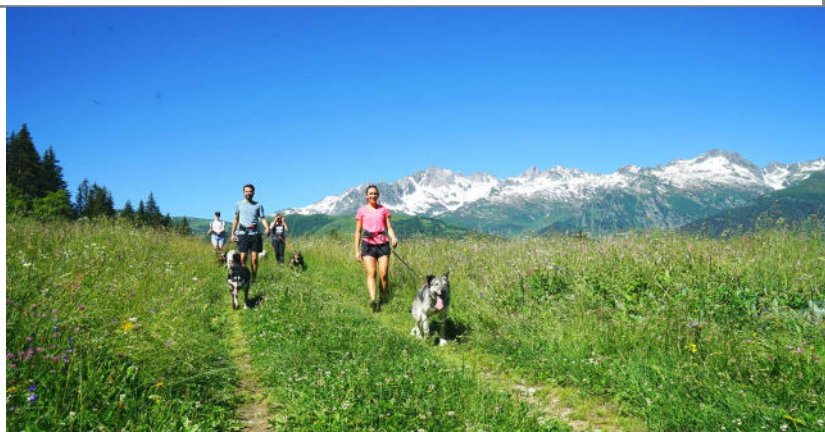




# ACTIVITIES

## ■ SHARE SPECIAL MOMENTS WITH ANIMALS!

Another fun way to hike, discovering nature in complete complicity with animals. Share a moment of complicity with a sporty and endearing animal!



## • ESCAPADES NORDIQUES

### Hiking with a dog

- > Tel : 00 33 7 85 99 61 90
- > Mail : [contact@escapadesnordiques.fr](mailto:contact@escapadesnordiques.fr)
- > Web site : [escapadesnordiques.fr](http://escapadesnordiques.fr)
- > FBook : Escapades Nordiques
- > INSTA : Escapades Nordiques

**From 06/07 to 30/08/2025**

No week-end outings

### • Share a special moment with a sporty and endearing animal.

Cani-rando is a walk during which you are connected to the harness of a sled dog by a suitable belt. Along the trails, it is an opportunity for an exchange between you and your companion, who helps you on the climbs, and whom you must control on the descents. You will be accompanied by Claire, a state-certified musher.

Booking required

Easy access by Valmobus shuttle

Rv at L'Aigle Blanc restaurant

From 7 years old - duration 2h30

### ► ADVENTURE PASS PARTNER



## • THE STABLES OF GRAND-COEUR

### Horse riding

- > Tel : 00 33 6 80 37 20 07
- > Mail : [ecuriesdegrandcoeur@hotmail.fr](mailto:ecuriesdegrandcoeur@hotmail.fr)
- > Web site : [ecuriesdegrandcoeur](http://ecuriesdegrandcoeur)

### Open all year round

• **Charlene** will be delighted to pass on her knowledge to you or improve your basic skills or take the federal exams. Outdoor riding as well as dressage, hunter and eventing.

Back in the saddle for children & adults.

Group lessons : maximum 6 riders

Private lessons : on request. From age 8.

Disable riders welcome. Courses during school holidays from 4 years.

Equi-coaching sessions

### ► ADVENTURE PASS PARTNER



# | SUMMER 2025 |

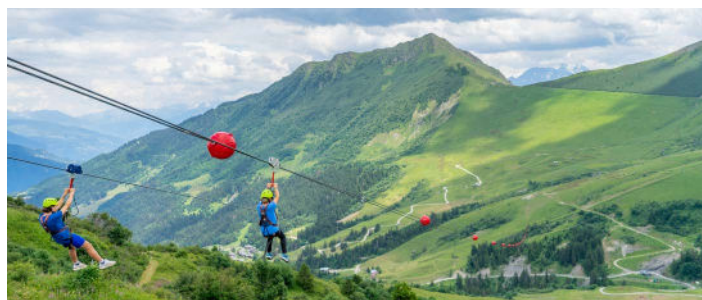
## ACTIVITIES

### • ESCAL'CANYON

- > Phone : 00 33 6 45 45 74 81
- > Mail : [escalcanyon@gmail.com](mailto:escalcanyon@gmail.com)
- > Web site : [escalcanyon.fr](http://escalcanyon.fr)
- > Insta : [escalcanyon](https://www.instagram.com/escalcanyon)
- From discovery to sporty outings, let yourself be guided by a passionate instructor for a climbing trip. Escal'Canyon offers group or individual lessons - special outings and climbing trips and courses for children aged 6 and over.

**From May to September**

**► ADVENTURE PASS PARTNER**



### • THE ZIPLINE

- > Mail : [info@magicadventure.org](mailto:info@magicadventure.org)
- > Web site : [www.magicadventure.org](http://www.magicadventure.org)
- > FBook : [valmobranch](https://www.facebook.com/valmobranch)
- Experience the thrill of a descent on France's longest duo zip line! From the top of the Planchamp gondola.

**Solo or as a duo!**

Length: 1400m - Vertical rise: 250m

Maximum overflight: 150m - Speed: 100 km/h

Flying time: 1.4 mn

Minimum/maximum weight: 30kg / 140kg

Return on foot or by gondola depending on opening times.

Possibility of taking your bike! (Contact the service provider)

Booking compulsory on the service provider's website.

**From age 6 in duo**

**From 01/07 to 31/08/2025**

Close on Monday - From 10am to 4.30pm

**► ADVENTURE PASS' PARTNER**



### • VALMO'BRANCH

#### The Treetop adventure

- > Mail : [info@magicadventure.org](mailto:info@magicadventure.org)
- > Web site : [www.magicadventure.org](http://www.magicadventure.org)
- > FBook : [valmobranch](https://www.facebook.com/valmobranch)

**From 28/06 to 31/08/2025**

Open from 10am to 6pm. Closed on Monday

- Let's discover the new courses for all levels ! Special for children: marmottons 3 to 6 years. Children's net course: without harness from 2 years old.

**Squirrel hut:** 4-11 years

**Climbing wall:** 1 section for children - 1 section speed climbing.

Book on line or on site without booking subject to availability.

**New :** treasure hunt for children !

**► ADVENTURE PASS'PARTNER**

### • SNOW TUBBING

- > Phone: 00 33 4 79 09 80 26
- > Web site: [skipass.valmorel.com](http://skipass.valmorel.com)

**From 28/06 to 31/08/2025**

- Open on Thursdays-Fridays-Saturdays-Sundays. From 10am to 12h35pm & 1.45 to 4.30pm

Experience the fun of snowtubing solo, with the family or with friends!

Each in your own giant buoy, up to 6 of you can hurtle down the

2 pistes. Children from 1.25m. Forbidden

to pregnant women. Single ticket or family pass

**► ADVENTURE PASS'PARTNER**





# | SUMMER 2025 |

## ACTIVITIES

### • ARCHERY

- > Meeting on the spot
- A sport of skill and concentration accessible to all. Come and enjoy this activity with friends or family. From age 6.

**From 08/07 to 27/08/2025**

From Monday to Friday

From 9.30am to noon & from 2 to 6.30pm

On Sunday from 2 to 5pm

### ▶ ADVENTURE PASS PARTNER



### • LE GOLF INDOOR

- > Phone: 00 33 4 79 09 99 91
  - Play golf on a high-tech simulator. Accessible to adults and children, right- and left-handed alike. Room «Pour Tous» under the cinema.
- From Monday to Friday. from 9am to 6 pm  
Advanced booking advised



### • INDOOR GAMES SIMULATOR

- > Phone : 00 33 4 79 09 99 91
- An excellent way to experience almost all ball sports with challenges between friends on this simulator more real than life. Bowling, footgolf, baseball, hockey, soccer, dodge ball, disc gol, wild west, inside heat quarterbacks, hoops, cornhole..... 1h session. Prices from 1 to 6 people. Room Salle pour tous under the cinema. Advanced booking advised



### • LASER ATTITUDE

#### Le Laser Game

- > Phone : 00 33 6 76 29 51 55
  - > Mail : laserattitude@gmail.com
  - > Web site : laser-attitude.com
  - > FBook : laser Attitude
  - > Insta : laserattitude
- In an enclosed inflatable area 144m2 of play space  
For children aged 6 and over.  
From 10 am to 5pm  
**On Sundays 13/07, 17/07, 10 & 17/08**



---

• **SPYDER MOUNTAIN**

---

**Swincar ride**

- > Phone : 00 33 6 12 45 43 77
- > Mail : spyder.mountain73@gmail.com
- > FBook : Spyder Mountain
- Come and discover or rediscover the Valmorel countryside, summer and winter alike, in our 100% electric Swincars. all-terrain electric quadricycle. A change of scenery and a thrill guaranteed, all while enjoying the peace and quiet of nature. Meet at Résidence Cheval Blanc B driving licence - Accessible to people with reduced mobility - Steering wheel controls. From 3 years old.

▶ **ADVENTURE PASS PARTNER**

---

• **ELECTRIC MOUNTAIN BIKE**

---

**All year round**

The Mountain Bike area is

- LA COCHE
- LES VIGNES
- LES CASCADES
- LES FÉES
- VALLÉE DU MOREL
- VALLÉE DE NÂVES

**Find out more about all the routes**

<https://www.valmorel.com/en/summer-activities/bikepark-mtb-cycling/e-bike-circuits/>

---

• **VALMO'TROTT**

---

**Electric Scooter**

- > Web site : [valmo-insolite.fr](http://valmo-insolite.fr)
- > FB : Valmo'Insolite
- Set off on an adventure on an all-terrain electric scooter ! Learn how to drive your 2-wheeled scooter and explore Valmorel's trails, during the day or as an aperitif. Take to the summits effortlessly! Supervised by a qualified instructor. 1h30 or 2h30
- Outings** - morning or afternoon.
- Apéro'trott outings** - in the evening Closed on Saturdays. All levels accepted. From 14 years old. Meeting point : Valmo'Bourricot-La yourte Helmet and gloves provided. Bookings : <https://www.valmo-insolite.fr/valmotrott/trott-ete/>





# ACTIVITIES

---

## • PARAPENTE VALMOREL

---

- > François Bailly
- > Phone : 00 33 6 18 51 80 18
- > Mail : francoisbailly7@gmail.com
- > Web site : parapente-valmorel.fr
- > FBook : ecoleparapentevalmorel

**From 07/07 to 30/08/20245**

Every day

### Beginners' course

- This course is aimed at those who have never flown a paraglider and want to discover the activity right up to their first big solo flights.

From 14 years old

### A course to improve your skills

- This course is aimed at those who have already taken an beginners' paragliding course and would like to move towards the beginnings of autonomy and start discovering flying in different aerological conditions.

From 14 years old

### Advanced training course

- Whether you have a dozen or several hundred flights under your belt, this course is for you. Go further and further in your autonomy and refine your piloting skills in all areas of flight.

From the age of 14

## Paragliding tandem flights

- Several flights are available at the paragliding school.
- Le Gollet - afternoon (from age 12)  
Les Lanchettes (from 11 years old)  
Le prestige flight - flight approx. 30 to 40 minutes. From age 12

## Tandem flights for children

- In the morning when the weather is calm, so that your little one can enjoy the scenery and the flight.
- From 6 to 11 years old

---

## • Franck Morard

---

## Paragliding tandem flights

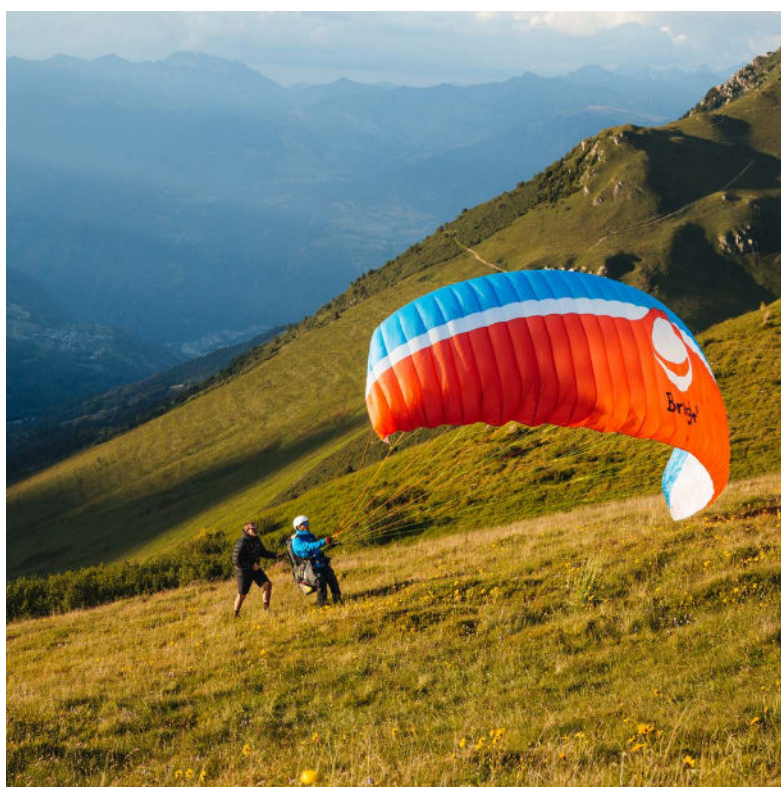
- > Adrenaline Parapente à Talloires-Montmin
- > Phone : 00 33 6 80 87 02 59
- > Mail : contact@annecy-parapente.fr
- > Web site : annecy-parapente.fr

- Overcome your fears and allow yourself a thrill of Adrenalin by realizing a unique and unforgettable adventure in one of the most beautiful site in the world: Above the Lake of Annecy!

Come and do a paragliding flight during the week...it's less crowded!

From 4 years old

**All year round. In summer time from 9am to 7pm**





# ACTIVITIES

## • CANYONING'SCHOOL

- > Phone : 00 33 6 12 29 75 10
- > Mail : sautel-florian@hotmail.fr
- > Web site : ecole-de-canyoning.fr
- > FBook : Ecole de Canyoning

**From 12/06 to 24/09/2024**

### **Canyoning Beginners'outing**

- Come and try your hand at canyoning with your family or friends. Enjoy a fun and refreshing time on the water in the heart of nature, in the Eau Rousse canyon. Canyoning is a river descent with jumps, slides, abseiling, caves, monkey bridges... Wearing wetsuits, harnesses and helmets, we'll be exploring a 100% natural environment. Equipment provided. Bring swimming costume, towel and lace-up trainers. From age 8

### **Canyoning advanced outing**

- Come and improve your canyoning skills with a more challenging outing. Enjoy a refreshing moment on the water in the heart of nature, in the Pussy canyon. Ages 10 and up

## ► ADVENTURE PASS PARTNER

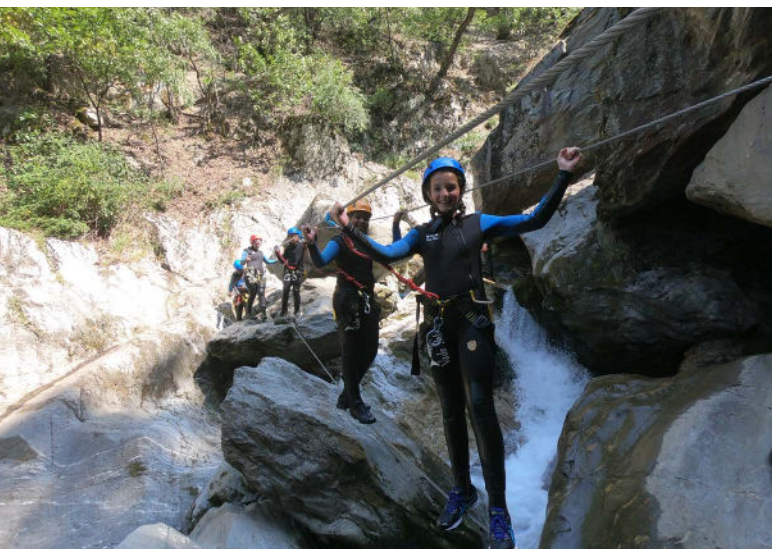
## • ESCAL'CANYON

- > Phone : 00 33 6 45 45 74 81
- > Mail : escalcanyon@gmail.com
- > Web site : escalcanyon.fr
- > Insta : escalcanyon

**From May to September. Every day**

### **Beginners & advanced outings**

- From discovery to sporty outings, let a passionate instructor guide you on a canyoning trip. Wearing a neoprene wetsuit, a buadrier and a helmet, we'll descend the canyons, adapting to the different obstacles: jumps, slides, abseils, etc. Discover the Eau-Rousse and Pussy canyons (La Léchère-les-bains) or Montmin towards Annecy. For children aged 8 and over.





# ACTIVITIES

## • AN RAFTING

- > Phone : 00 33 4 79 09 72 79
- > Mail : savoie@an-rafting.com
- > Web site : [www.an-rafting.com](http://www.an-rafting.com)
- > FBook : AN Rafting
- > Insta : an\_rafting

**From 08/05 to 30/09/2025**

Every day. Booking required

### **Hot Dog canoe on the Isere river**

- The canoe-raft, also known as the hot-dog, is an inflatable boat like the raft that allows you to descend sporty rapids in tandem without the disadvantages of a traditional kayak.

The canoe-raft is ideal for sharing a special moment together, and has plenty of surprises in store for you...

From age 14

### **Rafting down the Isere river in its entirety**

- The 23km rafting trip down the Haute-Isère stretches from Bourg Saint-Maurice to Centron. It's the longest rafting descent in France!

You'll travel through the prestigious Aime rapids and the magnificent Centron gorges! Ages 12 and up

### **Discovery Rafting trip on the Isere river**

- The Isère, considered to be one of the most beautiful rivers in the Alps, offers you the chance to embark on an exceptional descent and discover the magnificent Centron gorges and the Roman bridge... From 8 years

### **Rafting trip for advanced**

- The 16km rafting trip down the Isère can be done either from Bourg Saint-Maurice to Aime or from Bellentre to Centron (depending on your chosen timetable), but it also takes you through the rapids at Aime, home of the world canoeing and kayaking championships.

From 12 years

### **Hydrospeed trip on the Isère river for beginners**

- Come down the Haute-Isère on a hydrospeed! This 7km white-water hydrospeed descent runs from Aime to Centron.

It's a refreshing and thrilling activity, right next to the water spray! From age 14

### **Must Hydro trip on the Isère river**

- Discover the Aime rapids and perfect your hydrospeed skills. This activity is supervised by a qualified white-water guide and is open to anyone over 14 who can swim and has already practised hydrospeed.

From the age of 14

### **▶ ADVENTURE PASS'PARTNER**



### **Combined rafting and hydrospeed trip down the Isère**

- For the more adventurous, opt for the combined package including a rafting descent and a hydrospeed descent. Ideal for white-water lovers who don't want to miss a beat! From age 14

### **Combined rafting trip down the Isère & canoeraft**

- For the more adventurous, opt for the combined package that includes a rafting trip and a hot dog ride. Ideal for white-water lovers who don't want to miss a thing! From age 14



# ACTIVITIES

## • **ESSAONIA-ESPRIT RAFTING**

- > Phone : 00 33 6 63 08 30 16
- > Mail : [contact@essaonia.com](mailto:contact@essaonia.com)
- > Web site : [www.essaonia.net](http://www.essaonia.net)
- > FBook : EssaOnia Esprit Rafting
- > Insta : [essaonia\\_espritrafting](https://www.instagram.com/essaonia_espritrafting)

**From 01/05 to 30/09/2025**

• Our team of professional guides accompanies you on rafting, hydrospeed, canoraft and kayak.

**Rafting** on the Isère from age 10. **Rafting** on the Doron de Bozel from age 16.

**Gorges de l'Isère** from 8 years old.

**Hydrospeed for beginners** aged 14 and over. **Canoraft**: On the Isère for beginners aged 14 and over.

Chill out area by the water.

Base at Centron-Montgirod Village



## • **ÉVOLUTION 2**

- > Phone : 00 33 4 79 07 97 21
- > Mail : [info@h2osports.fr](mailto:info@h2osports.fr)
- > Web site : [h2osports.fr](http://h2osports.fr)
- > FBook : H2o Sports
- > Insta: Evolution2

**From 01/05 to 30/09/2025**

Open every day. Bookings required.

2 departure bases: Landry on the Isère and Salins-les-thermes on the Doron de Bozel.

Rafting on the Isère: 7 different descents.

Some descents from age 6

Rafting on the Doron de Bozel

3 different descents.

Descents according to age, intensity, duration and price

## **Rafting trip - The rafting base is in Landry village**

- Rafting is the most accessible of the whitewater sports.

Whether you're a thrill-seeker, a nature sports enthusiast or simply want to try it for the first time, this sport is sure to delight!

The Haute-Isère is a great place for youngsters to discover rafting, but there are also rapids and gorges for the more adventurous.

Duration: 2hrs 15mins. From 8 years

## **Canoe-Raft descent - Descent of the Isère river**

- You will learn how to guide your boat. You will start the session on the water to master paddling and safety techniques. River navigation and canoe turning exercises will be offered to perfect your whitewater sports experience. These unforgettable experiences will take place on the Isère river, on the course of the canoe-kayak championships in Bourg Saint Maurice.

Ages 12 and up

## **Hydrospeeding down the Isere river**

**Initiation trip** - From 12 years old

**Evolution trip** - From 14 years old - good swimmer - experience essential

**Advanced trip** - From 16 years old - good swimmer - experience essential

- Hydrospeed is the ultimate sport for thrill-seekers.

for thrill-seekers.  
On the Isère, the session will start with a lesson on the water, before you take to the waves. You'll be given the chance to try your hand at river snorkelling. There are different routes adapted to your technical level and physical condition. There are several groups of different levels. (good swimmers)

## **▶ ADVENTURE PASS'PARTNER**





## •FRANCE RAFT

- > Phone : 00 33 4 79 55 63 55
- > Mail : info@franceraft.com
- > Web site : franceraft.com
- > FBook : Rafting Franceraft
- > Insta: franceraft73

**From 01/05 to 30/09/2025**

Every day at 9am & at 2pm

### **Rafting trip : La totale**

The Isère and the cool waters of the Vanoise massif await you for a full rafting trip. Wild landscapes in unspoilt surroundings. The total trip is a **combination of a full descent of the Isère and two descents of the Doron de Bozel**. During the descent, there are several breaks to enjoy the water (swimming, jumping in the river and safety workshop with your guide). From 16 years

### **Rafting trip - The full descent of the Isère river**

The full descent of the Isère, is a varied 18 km course, and one of the longest in France. From Bourg Saint Maurice to Centron, in a magnificent mountain landscape, you will pass the famous Aime rapids, cross the magnificent Pucelle gorges, and finish with the Centron rapids. 2h30 of activity.

From Bourg ST Maurice to Centron: 18km

From 13 years

### **Rafting trip - Easy Rafting**

• The Isère and the cool waters of the Vanoise massif await you for a complete descent in easy rafting. Wild landscapes in an unspoilt setting for around **1h30 of activity** in the heart of nature.

From Aime to Centron: 7km

From age 9

### **Rafting trip - for children**

From Aime village to Centron village : 8 km - Dès 9 ans

### **Rafting trip for advanced on the Isère river**

• The Isère and the cool waters of the Vanoise massif await you for a full rafting trip. Wild landscapes in an unspoilt setting for around 1h45 of activity in the heart of nature.

From Bellentre and Centron: 12km

From age 13

### **Canoe raft trip - Les gorges itinerary**

• The Isère and the cool waters flowing from the Vanoise massif await you for a complete canoe raft descent.

The gorges route is the most suitable for this activity, a very gradual route that gives you time to learn the techniques of Canoe raft before the rapids at Centron.

From Aime to Centron: 7 km

From age 13



### **Hydrospeed trip - On the Isère river**

• The Isère is the most suitable river in Savoie for Hydrospeed or white-water swimming.

For beginners, this sporty descent allows you to experience the pleasures of gliding through the rapids and surfing the waves from the very first session. Approximately 1h30 in the water.

From Aime to Centron: 7 km

From age 13

### **► ADVENTURE PASS'PARTNER**



# | SUMMER 2025 |

## ACTIVITIES

### • DOUCY STATION

> Phone : 00 33 4 79 09 98 50

**From 28/06 to 31/08/2025**

From Sunday to Friday. From 10.30am to 6.30pm.

On Saturdays from 1.30 to 6.30pm

- Heated outdoor swimming pool located at an altitude of 1300m on the edge of the forest.

South-facing, it is bordered by large lawns for picnic lunches.

Deckchairs and parasols available

Drinks/coffee, cakes and ice creams on sale

**Swimwear compulsory.**

**Shorts not allowed**

► **ADVENTURE PASS'PARTNER**



### • CENTRE AQUATIQUE DU MOREL

> Phone : 00 33 4 79 24 05 25

> Web site : [piscinedumorel.com](http://piscinedumorel.com)

> FBook : [piscinedumorel](https://www.facebook.com/piscinedumorel)

**From 5/07 to 31/08/2025**

Every day. Open air swimming pool  
From 10.30am to 7pm

- A full range of leisure facilities for splashing about, relaxing or swimming laps.

- 1 indoor swimming pool, 25 m (in case of rain)

- 1 indoor learning pool with slide,

- 1 outdoor pool 25 m

- 1 leisure pool

- 1 paddling pool

- A 120m2 water playground

- 1 pentagliss with 4 lanes 40m long length

- 1 Mini golf

### **NEW !**

Jetski and water scooter activities

Every afternoon from 2 to 6 p.m

**NEW 2025** giant inflatable bubbles

Snack bar open in summer

**Swimming costume compulsory**

**Shorts not allowed**

► **ADVENTURE PASS'PARTNER**

Swimming pool at 12km from Valmorel

**Shuttles Vallée'Bus from Valmorel - Day pass 2€**







## **Bulle de détente**

- > Valmorel
- > At home - Outdoor - At the practice
- > Phone : 00 33 6 18 40 68 63
- > FBook : bullededetentetarentaise
- > Insta : bulle\_de\_detente-tarentaise

Valérie offers you techniques adapted to your needs, for your Bubble. In a chair, on a table or on the floor. Californian, Swedish, Tuina, Abhyanga, Nuad bo'rarn, Amma, Reiki. At home, at the Village Clubs Soleil, at Aigueblanche. From 8 years old.

## **Muscle toning session**

A session that listens to your body, gentle and accessible to all, to get the day off to a good start and enjoy the mountains to the full. Reservations required. Mats provided. Tuesdays and Fridays, 9.15am to 10.15am. Restaurant terrace, Chalet du Mottet. From age 8.

► **ADVENTURE PASS'PARTNER**

## **Energy specialist - Reiki - Lahochi**

- > Les Avanchers-Valmorel
- > Phone : 00 33 6 20 37 50 03

Marie offers energy treatments to help you on your way to well-being. Energy treatments relieve physical and emotional pain and bring mental calm and inner peace. It's a natural method designed to harmonise the body, emotions and mind. Accessible by Valmo'bus, line 2, Le Cornet stop.

All year round.

## **Éphélides Massages**

- > At home & Aigueblanche
- > Phone : 00 33 6 31 84 02 44
- > FB : ephelides-massages
- > Insta : ephelides\_massages

Éphélides Massages are the hands of a fairy at the service of performance and of sports, physical and mental recovery, letting go and the beauty of the face. Swedish, Thai, deep tissue and myofascial massages.

► **ADVENTURE PASS'PARTNER**



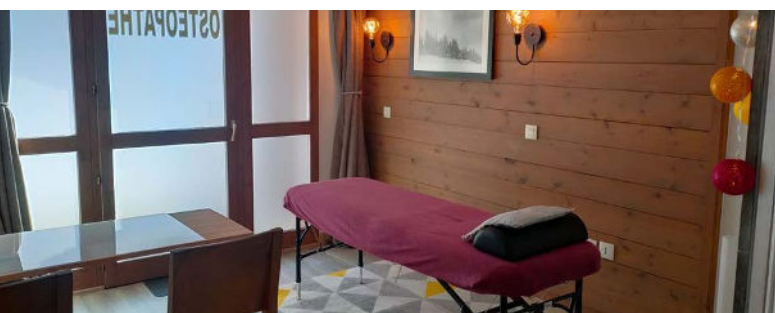
# WELL BEING

## Espace Santé Bien-Être l'Équilibre

- > Valmorel & Aigueblanche
- > Phone : 00 33 6 10 70 00 88

A multidisciplinary space bringing together therapists in a dynamic and caring environment.

Open all year round from 8am to 9pm  
Valmorel: Athamante 3 residence on the ground floor



## Traditional Chinese Medicine

- > Espace Santé Bien-être l'Équilibre
- > Phone : 00 33 6 70 46 54 37

Using the tools of Chinese medicine (acupuncture, massage), I offer you a tailor-made treatment. Together, we work to restore your physical and mental balance for lasting wellbeing

## ADVENTURE PASS'PARTNER

### Naturopath & reflexologist

- > Espace santé Bien-être, l'Equilibre à Valmorel (athamante 3) et Aigueblanche
- > Open all year round
- > Phone : 00 33 6 18 93 63 37
- > FBook : Julie Ferroux - EI, réflexologue certifiée RNCP

Julie helps people suffering from insomnia, fatigue and pain to find restful sleep and energy through foot and craniofacial reflexology in the Chinese tradition and naturopathy.

Winter/summer seasons at Valmorel  
All year round at Aigueblanche

## ADVENTURE PASS'PARTNER

## Spa Montagnes du Monde

- > Résidence MGM Anitéa & Akoya
- > Phone : 00 33 4 79 04 05 20

Discover the top-of-the-range spas at our two residences, **Anitéa and Akoya**. Enjoy massages, body treatments and facials, both solo and for two. One hour of access to the spa (swimming pool, jacuzzi, sauna, hammam...) is free for every 50 minutes of treatment booked. Combined with Pure Altitude, mountain plant treatments.

## Spa Ô des Cimes

- > Résidence CGH La Grange aux Fées
- > Phone : 00 33 4 79 07 47 43

Let yourself be transported into the magical world of the Ô des Cimes spas, where water, wood and stone invite you to return to your roots. Facial and body treatments, scrubs, relaxing massages... Treat yourself to a moment of absolute relaxation. **For children aged 6 and over**, Ô des Cimes offers specially adapted treatments.



## Spa Sothys - Club Med

- > Le Club Med
- > Phone : 00 33 4 79 41 61 00

Haute Beauté» Face and Body. Immerse yourself in a world of refinement and simplicity, and enjoy the ultimate experience of Haute Beauté face and body treatments.





| **SUMMER 2025** |

# WELL BEING

## Spa Ô des Lauzes

- > Thermal Spa of La Léchère Les Bains
- > Phone : 00 33 4 79 22 44 16

This 1500m square Spa is the largest thermal spa in Savoie. It is entirely supplied **with thermal water**. Massages, facials and body treatments. Balneotherapy treatments.

The aqua-ludic section features a succession of pools for relaxation and well-being.

Indoor and outdoor Jacuzzis.

The Spa Ô des Lauzes has been awarded the 5 lotus spa de France label.

► **ADVENTURE PASS'PARTNER**

## Osteopath

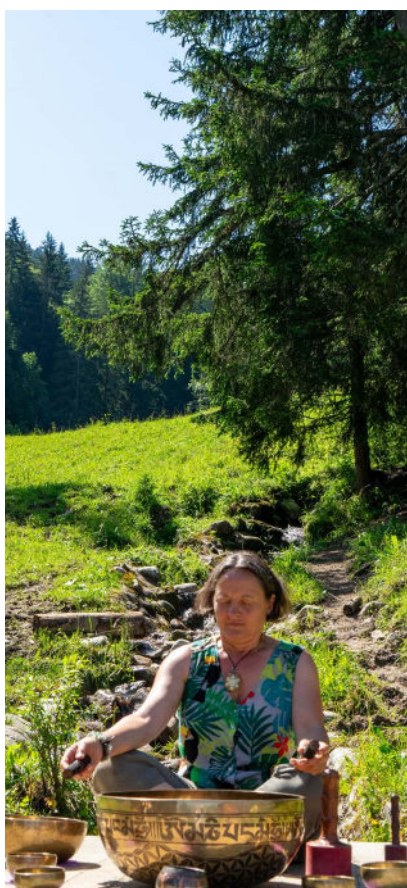
- > Valmorel & La Léchère les Bains
- > Phone : 00 33 6 10 70 00 88

At your home or in your practice.

Osteopathy treats the cause of your physical and emotional pain in a gentle and appropriate way.

Open all year round from 8am to 9pm.

By appointment by phone or on [doctolib.fr](https://www.doctolib.fr)  
All year round.



# ACTIVITIES

## SPORTS & LEISURE FACILITIES IN VALMOREL

### Multi-sports area

**From 25/05 to 27/10**

Agorespace offering the chance to play football & basketball

The pitch offers a superb setting with views of the mountains.

Free access

Tournaments organised by the tourist office. See programme event.

### Table tennis

**All year round**

1 table at the start of the télébourg

Several tables available in the resort in summer

Free access

Table tennis rackets can be borrowed from the tourist office, subject to conditions. (July-August).

### Pétanque court

**All year round**

In all areas of the resort

At La Forêt, Le Mottet and the Théâtre de Verdure.

Free access

Loan of equipment from the tourist office subject to conditions (July-August).



### Cinema

> Phone : 00 33 4 79 09 81 20

**From 29/06 to 29/08**

2 cinema screens

4 screenings a day at 6pm and 9pm.

In the event of bad weather, additional screenings at 2.30pm (films scheduled at 6pm).

Purchase of tickets on site

### Beach-Volley court

**From 25/05 to 31/08**

Next to Rue du Bourg and the archery field

Free access

Loan of equipment from the tourist office subject to conditions (July-August).

### Tennis courts

**From 20/04 to 15/10**

3 tennis court at hameau du Mottet

Free access to the tennis courts

A tennis court is reserved for training courses

Prêt de matériel à l'office de tourisme sous

### Playground for children

**All year round**

**Depending on the weather**

Swings, slides...

Free access

Under parents' responsibility

Hamlet of Crève-Coeur

Hamlet of La Forêt-théâtre de verdure

### Sport-Santé-Nature trail

**Spring-summer-autumn time**

Departure from the hamlet of Crève-Coeur or the hamlet of La Forêt

Some apparatus on the «La Belle Balade» family trail

Gradual ascent, ideal circuit for a return to trail running.



### NEW 2025 !

#### Pic nic area

**Planchamp Gondola** : terrace to chill out  
15mn walk from the top of the gondola

**Pierrafort Gondola** : by the pond





# ACTIVITIES

## SPORTS & LEISURE FACILITIES IN DOUCY-STATION

### Skate Parc

#### From end of June to mid-September

In the forest, just 2 minutes from the resort centre, come and enjoy the skatepark with rails!

The ground is tarmac. Free access

### Multi-sports area

#### From mid- June to mid-September

A skatepark with rails, ramps and fun boxes.

A multi-activity pitch for playing basketball, mini-football and tennis.

Equipment available on loan from the tourist office subject to conditions (July-August).

### Table tennis

#### July & August

Tables are available in the heart of the resort.

Loan of equipment from the tourist office subject to conditions (July-August).

### Beach-Volley court

#### July & August

Beach volleyball court by the pool.

Free access

Loan of equipment from the tourist office subject to conditions (July-August)



### Playground for children

#### July - August

In the centre of the village

Swings, slides, zip line....

Inflatable games.

Under parents' responsibility.

Free access

### Pétanque area

#### July-August-September

In the centre of the village

Free access

Loan of equipment from the tourist office subject to conditions (July-August)

### BBQ area

#### June-July-August-September

2 steps from the village

The wolf's hut ! On the edge of the forest.

Great evenings ahead! On the piste,

opposite the swimming pool Chantemerle district. Barbecue and picnic tables

Free access

## SERVICES

### Library

1st floor of the tourist office

open during Tourist Office opening hours

### Interactive information terminal

Outside the tourist office. 24h/24h & 7/7

### Cash machine

Outside the tourist office. 24h/24h & 7/7

### Police station - Gendarmerie

Moutiers - 15 km

Phone : 00 33 4 79 24 00 15

### Multimedia library

La Léchère les Bains - 15km

FB : Médiathèque Village 92

## HEALTH

### Nurses

> Maison de santé - in Aigueblanche

> Phone : 00 33 6 47 16 43 07

No appointment necessary at the surgery on Mondays and Fridays from 7am to 8am and from Monday to Fridays from 11.30am to 12.15pm. By appointment at home.

### Medical Centre

> La Tour - Valmorel - ground floor

> Phone : 00 33 4 79 09 80 45  
00 33 7 67 25 18 19

9/07 to 29/08. Every day from 10am to 12pm & from 4 to 6pm

### The pharmacy

> Le bourg main street - Valmorel

> Phone : 00 33 4 79 09 81 37

